

MANUAL DE DESPIECES

02. ENGINE

RADIATOR

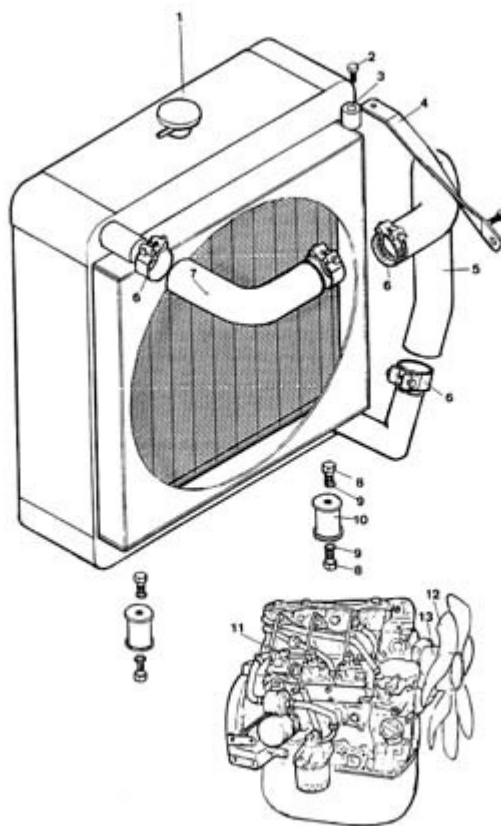


FIGURA	REFERENCIA	DENOMINACIÓN	CANTIDAD
001	59.60410.00	RADIATOR	1
002	603.06010.86	SCREW DIN933 M6x10	2
003	85.11300.65	SHOCK ABSORVER	1
004	10.02155.00	TIE ROD	1
005	43.13160.00	3LD1 HOSE RADIATOR UPPER	1
006	935.25040.66	CLAMP	4
007	43.13150.00	3LD1 HOSE RADIATOR UPPER	1
008	603.08020.86	SCREW DIN933 M8x20	4
009	104.08000.00	WASHER DIN7980 D8	4
010	82.00712.02	SHOCK ABSORVER	2
011	05.60410.01	DIESEL ENGINE	1
012	45.89709.00	FAN	1
013	IZ8970634001	SPACER	1
014	86.70000.04	OIL FILTER	1
015	86.70000.07	ELECTRIC FUEL PUMP (CH 200)	1
016	86.70000.03	CALENTADOR 3LB1	1

HYDRAULIC DIAGRAM INSTALLATION MOTOR SUPPORT

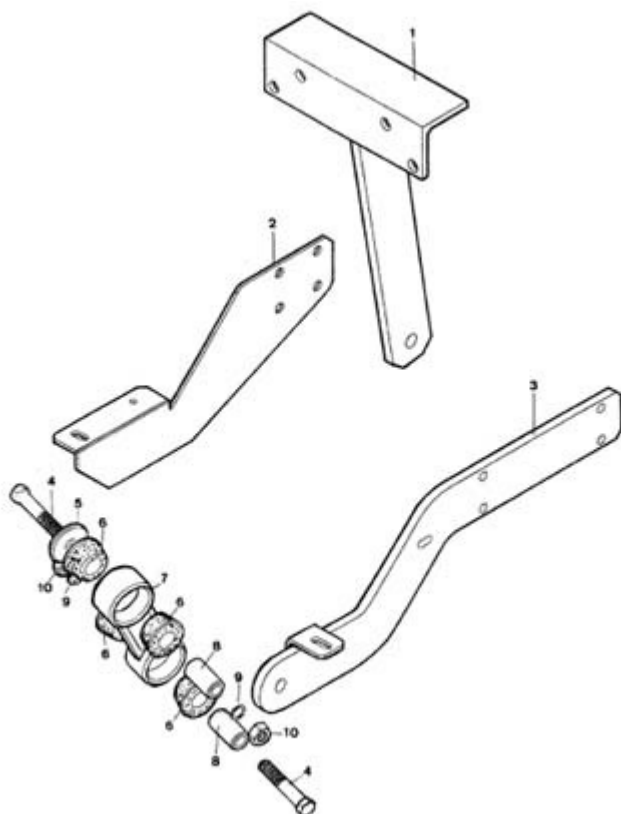


FIGURA	REFERENCIA	DENOMINACIÓN	CANTIDAD
001	46.10776.00	ENGINE SUPPORT	1
002	10.02152.00	BRACKET ANG.	1
003	10.02151.00	ENGINE SUPPORT	1
004	604.14080.86	SCREW DIN931	2
005	37.00374.00	WASHER DIN9021 14,5x50x5	2
006	15.00113.00	SHOCK DAMPER 22X47X22.5 GOMA	4
007	01.00112.10	TIE ROD	1
008	15.00114.01	BUSH	2
009	104.14000.00	CIR-CLIP EXT. DIN7980	2
010	701.14000.66	NUT DIN934 M14x2	2

02. ENGINE

GAS-OIL TANK

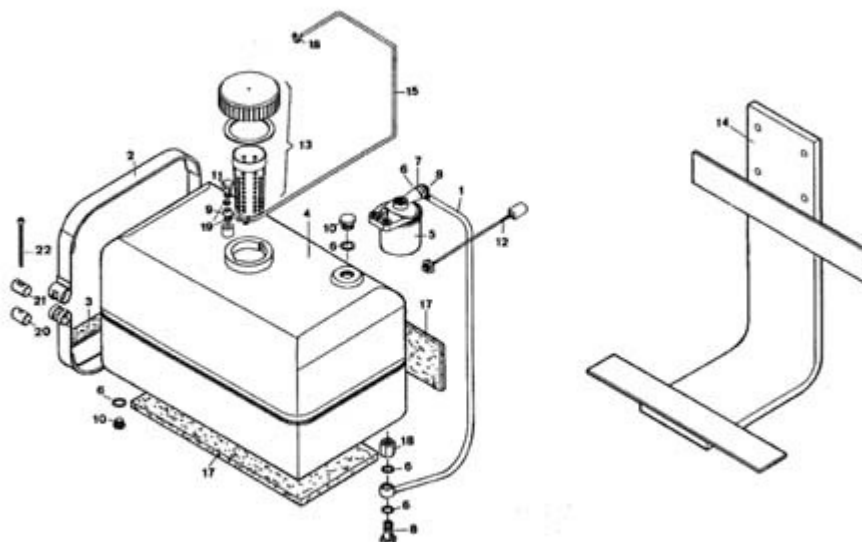


FIGURA	REFERENCIA	DENOMINACIÓN	CANTIDAD
001	43.14105.12	TUBO GOMA B/P 8x14x1010 (CH 250)	1
002	83.14105.12	0	2
003	46.10791.00	PROFILE	1
004	82.00351.10	TANK	1
005	MN000029	FUEL FILTER GASOIL	1
006	107.14000.10	WASHER AL 14x20x1.5	6
007	45.04106.00	NIPPLE O/TB	1
008	52.00110.00	NIPPLE SCREW SIM.	2
009	45.04107.00	FITTING O/TB D3-D8.2	1
010	80.01035.00	SCREW DIN910*	2
011	80.06041.00	FITTING SCREW SIM. M8x1x16	1
012	43.70261RE00	BUOY OIL LEVEL INDICATOR	1
013	80.05055.00		1
014	46.00753.01	SOP. FIJACION 175x260x310	1
015	43.14105.06	TUBO GOMA B/P 4x9x800	1
016	912.10000.66	CLAMP	2
017	83.00351.19	PERFIL GOMA 10x20x260 ADHESIVO	2
018	38.00106.00	ADAPTADOR RACOR NIVEL GAS-OIL	1

02. ENGINE

GAS-OIL TANK

FIGURA	REFERENCIA	DENOMINACIÓN	CANTIDAD
019	107.08000.10	WASHER AL 8x13.5x1.5	2
020	80.05052.00	SHAFT CIL/CIL	2
021	80.05051.00	SHAFT CIL/CIL	2
022	601.06080.86	SCREW DIN912 M6x80	2

02. ENGINE

AIR FILTER COMP.

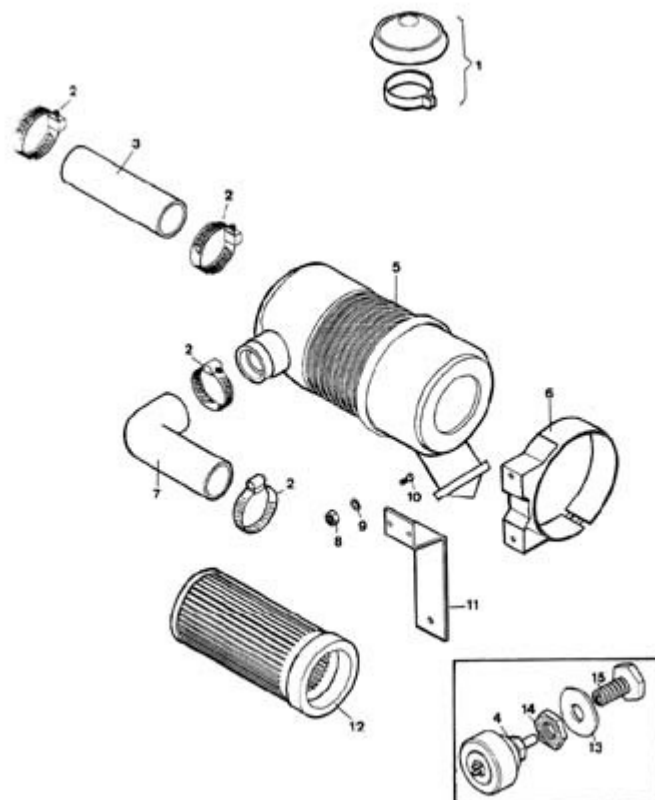


FIGURA	REFERENCIA	DENOMINACIÓN	CANTIDAD
001	45.01202.00	AIR FILTER PROTECTOR	1
002	912.40060.66	CLAMP D40-60	4
003	46.10194.00	HOSE RUBBER B/P	1
004	43.50119.00	AIR FILTER INDICATOR	1
005	45.01200.10	AIR FILTER D	1
005	45.01200.00	AIR FILTER	1
006	45.01201.11	CLAMP Ø146x50.5 AIR FILTER	1
007	45.11194.03	TUBO ADMISION 50X60X130X215 CO	1
008	701.08000.66	NUT DIN934 M8X1,25	2
009	104.08000.00	WASHER DIN7980 D8	2
010	603.08010.86	SCREW DIN933 M8x10	2
011	46.00107.03	SOP. PAS. REC. 4X70X220 FILTRO	1
012	45.01204.00	FILTER ELEMENT 60x105x300 (500H)	1
012	43.01203.01	FILTER ELEMENT	1
013	112.10000.66	WASHER DIN9021 D10	1
014	709.10000.66	NUT	1
015	43.11192.00	NIPPLE M/H	1

02. ENGINE SILENCER

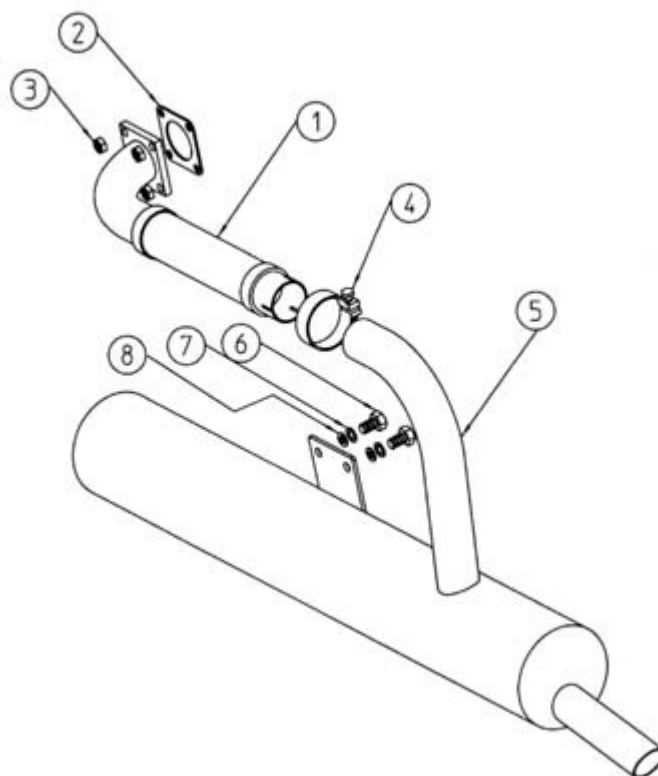


FIGURA	REFERENCIA	DENOMINACIÓN	CANTIDAD
001	46.20150.00	EXHAUST MANIFOLD	1
002	05.91019M100	GASKET	1
003	701.10000.66	NUT DIN934 M10x1.5	4
004	935.47051.66	CLAMP	1
005	43.00123.12	MUFFLER	1
006	603.10020.86	SCREW DIN933 M10x20	2
007	104.10000.00	WASHER DIN7980 D10	2
008	101.10000.66	WASHER DIN125 D10	2

02. ENGINE CLUTCH

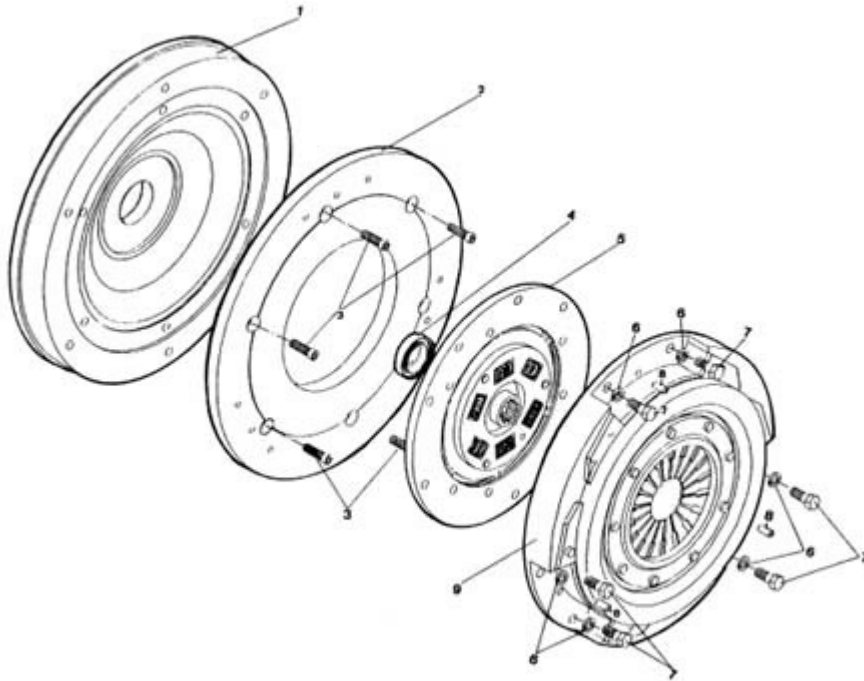


FIGURA	REFERENCIA	DENOMINACIÓN	CANTIDAD
001	45.04214.00	0	1
002	45.04213.04	PANEL	1
003	601.08025.86	SCREW DIN912	6
004	309.17012.00	BEARING DIN625	1
005	16.00201.00	DISK CLUTCH	1
006	104.08000.00	WASHER DIN7980 D8	6
007	603.08020.86	SCREW DIN933 M8x20	6
008	402.06015.00	PIN	3
009	15.00202.10	PRESSURE PLATE	1

02. ENGINE ACCELERATOR

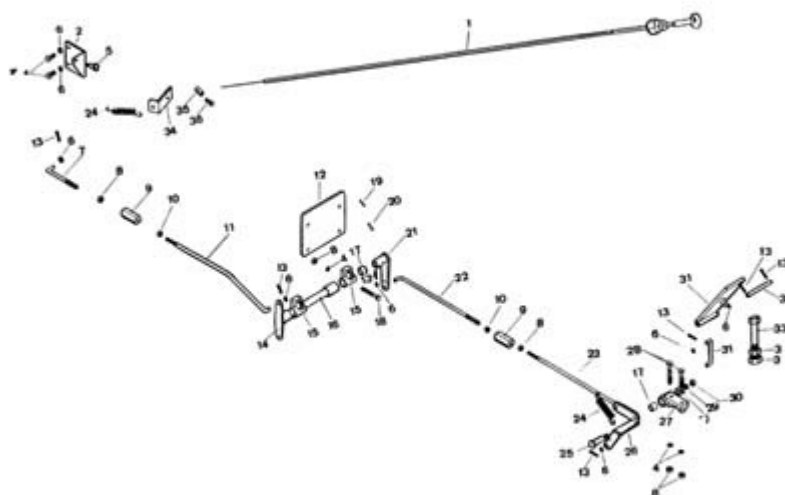


FIGURA	REFERENCIA	DENOMINACIÓN	CANTIDAD
001	46.00148.00	CABLE CHOKE	1
002	46.00156.00	0	1
003	701.08000.66	NUT DIN934 M8X1,25	2
004	603.06015.86	SCREW DIN933 M6x15	2
005	84.59180.42	CIERRE CABLE ACC.	1
006	104.06000.00	WASHER DIN7980 D6	7
007	45.00130.00	ROD L6	1
008	701.06000.66	NUT DIN934 M6X1	5
009	01.00133.00	TENSIONER	2
010	01.00138.00	NUT	2
011	46.10152.00	VARILLA FORL6 6X515X18	1
012	46.00130.00	SOPORTE REENVIO	1
013	401.02025.60	PIN DIN94 2x25	8
014	46.00151.01	PALANCA ACELERADOR	1
015	15.00124.03	BEARING	2
016	46.00150.00	EJE CAS/CAS 9x9x180	1
017	01.00145.00	BEARING	4
018	604.06045.86	SCREW DIN931 M6x45	2

02. ENGINE

ACCELERATOR

FIGURA	REFERENCIA	DENOMINACIÓN	CANTIDAD
019	402.02016.00	PIN	2
020	402.04016.00	ROLL PIN DIN1481 4x16	2
021	16.00151.00	ACC.LEVER	1
022	46.00627.00	ROD L6	1
023	43.50727.01	VARILLA FORL6 260 @-M	1
024	45.00139.00	SPRING TENSION	2
025	00.01366.01	AXLE 16X7X47 THROTTLE PEDAL	1
026	46.00127.01	PALANCA REENVIO ACEL.	1
027	01.00126.02	AXLE SUPPORT 20X29X60	1
028	611.07035.66	SCREW DIN84	2
029	104.08000.00	WASHER DIN7980 D8	1
030	701.07000.66	NUT	1
031	45.00127.00	ACCEL. PEDAL	1
032	45.00124.00	SHAFT CIL/CIL	1
033	603.08050.86	SCREW ISO7380	1
034	45.04113.00	SPRING SUPPORT	1
035	84.56000.31	CIERRE CABLE MANDO	1
036	84.50002.19	SCREW	1

02. ENGINE

BRAKE CONTROLS

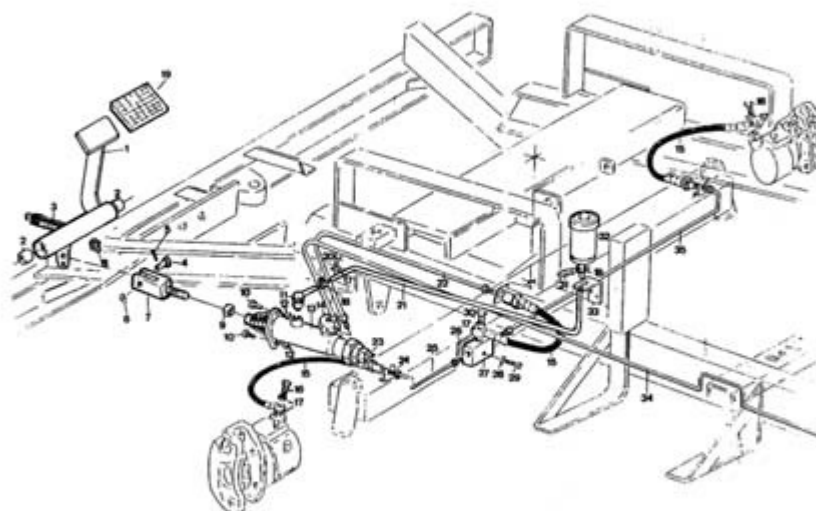


FIGURA	REFERENCIA	DENOMINACIÓN	CANTIDAD
001	46.00519.03	PEDAL FRENO	1
002	923.18030.00	BEARING	2
003	00.00515.00	SPRING TENSION	1
004	01.00514.01	AXLE CIL/CPA 14x8x28	1
005	401.02025.60	PIN DIN94 2x25	2
006	101.07000.66	WASHER DIN125	2
007	01.00564.02	ACC. FORK	1
008	901.08000.33	GREASER DIN71412-A M8x1,25	1
009	01.01304.00	NUT	1
010	603.08025.86	SCREW DIN933 M8x25	2
011	43.00747.30	TAPON. BOMBA PIE	1
012	701.08000.66	NUT DIN934 M8X1,25	2
013	46.00747.20	BRAKE PUMP	1
014	46.01064.00	NIPPLE O/H/H	1
015	46.07777.00	HOSE R1T1	3
016	46.01065.01	FITTING SCREW SIMPLE M10x1	2
017	107.10000.10	WASHER AL	6
018	912.09000.66	CLAMP	2

02. ENGINE

BRAKE CONTROLS

FIGURA	REFERENCIA	DENOMINACIÓN	CANTIDAD
019	43.07310.01	PANEL	1
020	31.01065.00	NIPPLE SCREW SIM.	1
021	46.00749.01	TUBO PLAS. TRANS. 6x9x1550 FRE	1
022	46.07771.02	TUBE BUNDY3	1
023	43.01521.00	SWITCH	1
024	904.16000.00	ANILLO DIN471 D16	3
025	46.07774.00	TUBE BUNDY3	1
026	46.07778.00	SUPLEMENTO 3x30x30	2
027	15.07777.00	NIPPLE H/H/H	1
028	104.06000.00	WASHER DIN7980 D6	2
029	603.06020.86	SCREW DIN933 M6x20	2
030	46.01065.00	NIPPLE SCREW SIM.	1
031	15.00836.01	PIN DIN11024	1
032	43.00751.01	BRAKING LIQUID TANK	1
033	15.00836.01	PIN DIN11024	1
034	46.07773.02	TUBE BUNDY3	1
035	46.07775.00	TUBE BUNDY3	1

02. ENGINE BRAKE

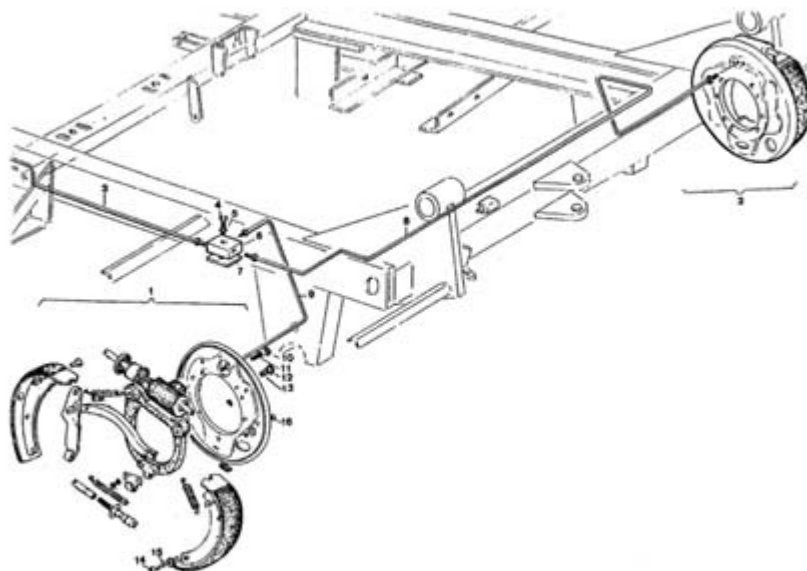


FIGURA	REFERENCIA	DENOMINACIÓN	CANTIDAD
001	46.00403.00	BRAKE	1
002	46.00404.00	BRAKE	1
003	46.07773.01	TUBE BUNDY3	1
004	603.06020.86	SCREW DIN933 M6x20	2
005	104.06000.00	WASHER DIN7980 D6	2
006	15.07777.00	NIPPLE H/H/H	2
007	46.07778.00	SUPLEMENTO 3x30x30	2
008	46.07776.01	TUBE BUNDY3	1
009	46.07772.01	TUBE BUNDY3	1
010	45.00408.40	TORNILLO PURGA BOMBIN FRENO	1
011	45.00408.41	CAP	1
012	701.08000.66	NUT DIN934 M8X1,25	2
013	45.00408.58	SCREW DIN912	2
014	45.00408.56	SPRING SUPPORT	4
015	45.00408.57	SPRING COMPRESSION	2
016	45.00408.55	SHAFT CIL/CIL	2

02. ENGINE

INSTALLATION FREINS HYDRAULIQUE

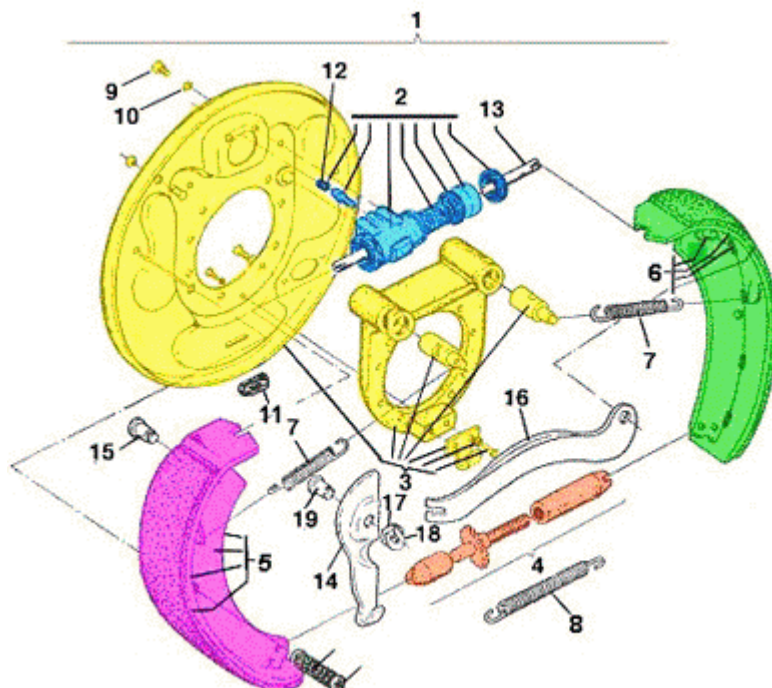


FIGURA	REFERENCIA	DENOMINACIÓN	CANTIDAD
001	45.00408.01	BRAKE PLATE (RIGHT)	1
001	45.00407.01	BRAKE PLATE (LEFT)	1
002	45.00408.34	BRAKE CYLINDER	2
003	45.00408.20	BRAKE PLATE (RIGHT)	2
003	45.00407.20	KIT BRAKE SHOE (LEFT)	2
004	45.00408.46	TENSIONER	2
005	45.00408.26	BRAKE SHOE	1
005	45.00407.26	BRAKE SHOE	1
006	45.00408.29	BRAKE SHOE	2
007	45.00408.44	SPRING TENSION	4
008	45.00408.45	SPRING TENSION	2
009	45.00408.58	SCREW DIN912	4
010	45.00408.59	NUT DIN934 M8	4
011	45.00408.60	CAP	2
012	45.00408.61	CAP	2
013	45.00408.42	ROD	1
014	45.00407.51	TIE ROD	1
014	45.00408.51	TIE ROD	1
015	45.00408.41	CAP	1
016	45.00408.49	AXLE CIL/ROS TENSIONER	1
017	45.00408.53	WASHER DIN137 10,5x18x1	2
018	45.00408.54	CLIP	2

019

45.00408.40

TORNILLO PURGA BOMBIN FRENO

1

02. ENGINE

BRAKE PUMP

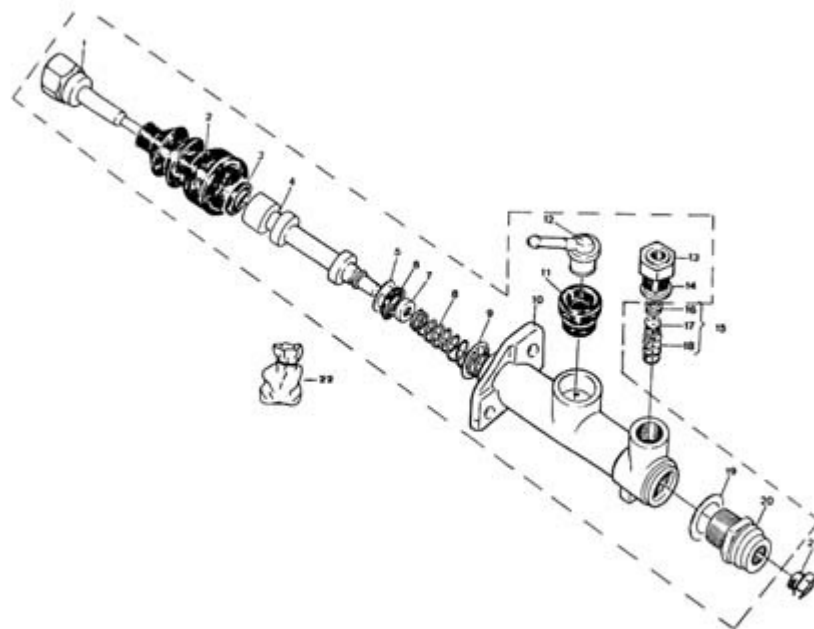


FIGURA	REFERENCIA	DENOMINACIÓN	CANTIDAD
001	46.00747.20	BRAKE PUMP	1
015	43.00747.34	VALVE	1
021	15.07780.00	SCREW DIN910*	1
022	43.00747.90	GASKET SET	1

02. ENGINE

OIL TANK

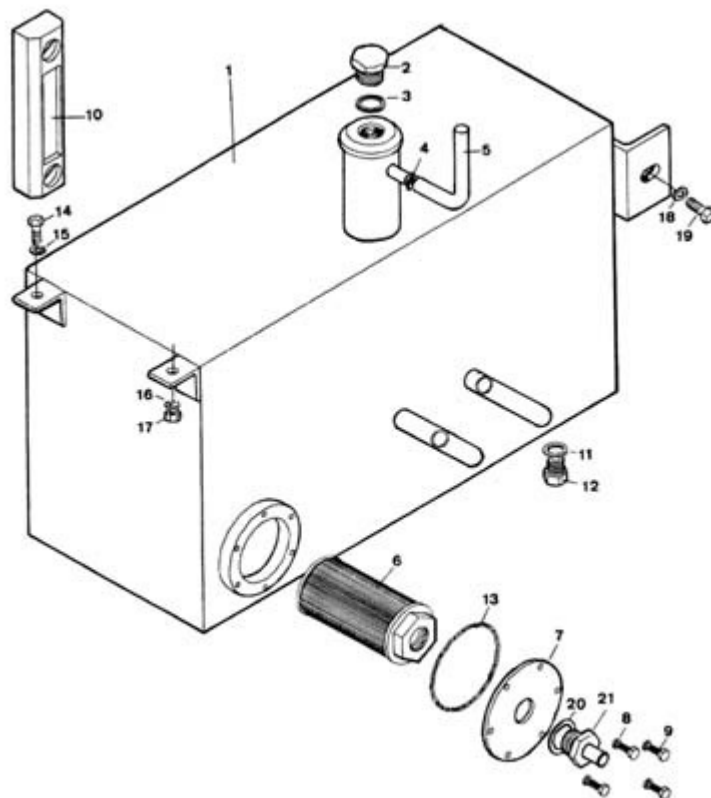


FIGURA	REFERENCIA	DENOMINACIÓN	CANTIDAD
001	46.01240.01	TANK	1
002	45.10803.00	CAP	1
003	08.00316.00	METALLIC GASKET BUNA D1/2 G	1
004	912.12000.66	CLAMP	1
005	43.01426.10	TUBO PLAS. TRANS. 10x12x375	1
006	09.00630.61	OIL FILTER ASP. 25 L/MIN	1
007	02.01432.01	COVER HANDHOLE	1
008	104.06000.00	WASHER DIN7980 D6	6
009	603.06015.86	SCREW DIN933 M6x15	1
010	43.20015.00	LEVEL	1
011	107.14000.10	WASHER AL 14x20x1.5	1
012	00.02803.00	SCREW DIN910*	1
013	201.75003.50	O-RING DIN3770 75x81x3	1
014	603.08020.86	SCREW DIN933 M8x20	2
015	101.08000.66	WASHER DIN125 D8	2
016	104.08000.00	WASHER DIN7980 D8	2
017	701.08000.66	NUT DIN934 M8X1,25	2
018	104.10000.00	WASHER DIN7980 D10	1

02. ENGINE

OIL TANK

FIGURA	REFERENCIA	DENOMINACIÓN	CANTIDAD
019	603.10020.86	SCREW DIN933 M10x20	1
020	45.01423.00	GASKET	1
021	02.01433.00	SOP. FILTRO ASP. 18x41	1

TRANSMISSION CLUTCH BELL HOUSING

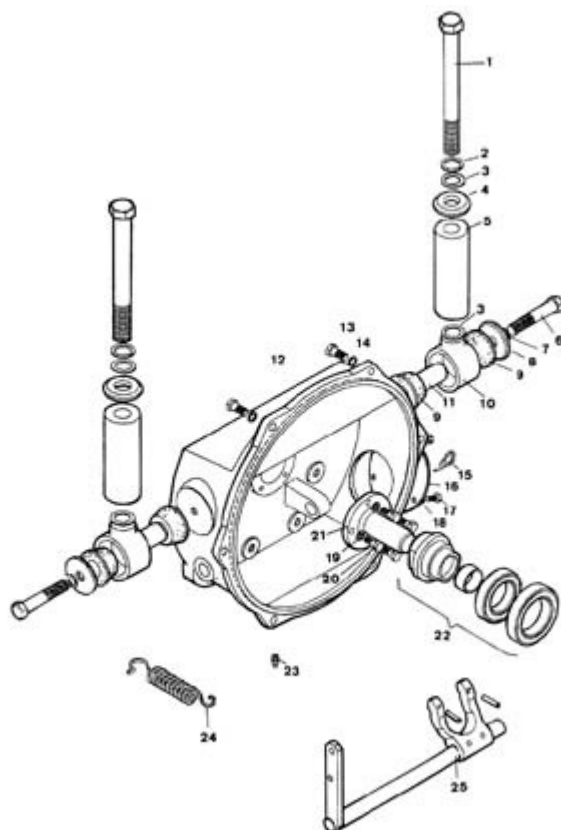


FIGURA	REFERENCIA	DENOMINACIÓN	CANTIDAD
001	604.14130.96	SCREW	2
002	104.14000.00	CIR-CLIP EXT. DIN7980	2
003	101.14000.66	WASHER DIN125 D14	4
004	01.00227.02	WASHER DIN125	2
005	46.00910.00	REGUL SPACER	2
006	604.14075.86	SCREW DIN931	2
007	104.14000.00	CIR-CLIP EXT. DIN7980	2
008	37.00374.00	WASHER DIN9021 14,5x50x5	2
009	15.00113.00	SHOCK DAMPER 22X47X22.5 GOMA	4
010	01.00107.00	SHOCK ABSORVER SUPPORT	2
011	15.00114.00	BUSH	2
012	45.04211.01	CLUTCH CASING	1
013	603.10030.86	SCREW DIN933	8
014	104.10000.00	WASHER DIN7980 D10	8
015	01.00220.01	SPRING TORSION	1
016	01.00225.10	COVER HANDHOLE	1
017	603.06015.86	SCREW DIN933 M6x15	6
018	104.06000.00	WASHER DIN7980 D6	6

TRANSMISSION CLUTCH BELL HOUSING

FIGURA	REFERENCIA	DENOMINACIÓN	CANTIDAD
019	104.08000.00	WASHER DIN7980 D8	4
020	603.08020.86	SCREW DIN933 M8x20	4
021	01.00235.00	BEARING SUPPORT	1
022	45.04204RE01	THROWOUT BEARING	1
023	901.08000.33	GREASER DIN71412-A M8x1,25	1
024	01.00223.02	SPRING TENSION	1
025	46.00020.02	SHAFT CIL/CIL	1

TRANSMISSION CLUTCH PEDAL

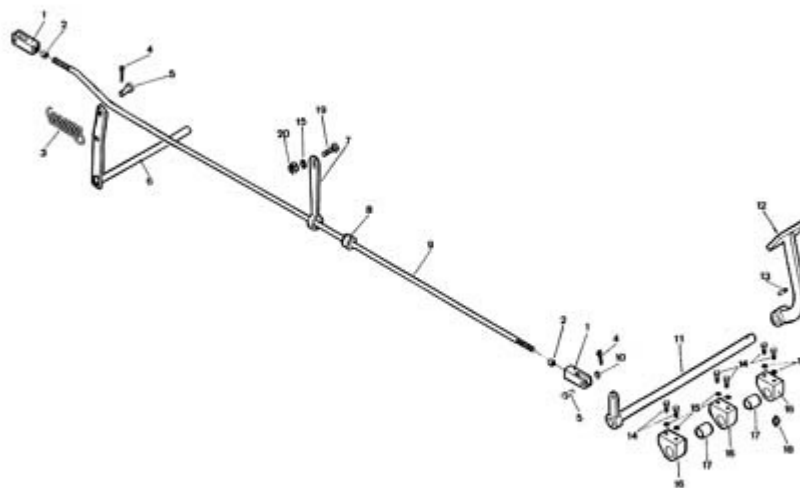


FIGURA	REFERENCIA	DENOMINACIÓN	CANTIDAD
001	15.00719.10	ART. FORK	2
002	701.10000.66	NUT DIN934 M10x1.5	2
003	01.00223.02	SPRING TENSION	1
004	401.02025.60	PIN DIN94 2x25	2
005	01.00514.01	AXLE CIL/CPA 14x8x28	2
006	46.02110.01	EJE CIL/CIL 18x18x290 C/P	1
006	46.00020.02	SHAFT CIL/CIL	1
007	01.00539.00	TUBE GUIDE SUPPORT	1
008	01.00540.00	ACC. FORK	1
009	46.00217.02	VARILLA FOR.12 1480 M12-M12	1
010	101.08000.66	WASHER DIN125 D8	2
011	46.02120.01	EJE CIL/CPA 18x32x493 C/P	1
012	46.00216.01	PEDAL EMBR.	1
013	402.06030.00	PIN	2
014	603.08020.86	SCREW DIN933 M8x20	6
015	104.08000.00	WASHER DIN7980 D8	7
016	43.00736.00	SUPPORT ART.	3
017	923.18030.00	BEARING	2

TRANSMISSION CLUTCH PEDAL

FIGURA	REFERENCIA	DENOMINACIÓN	CANTIDAD
018	901.08000.33	GREASER DIN71412-A M8x1,25	3
019	603.08025.86	SCREW DIN933 M8x25	1
020	01.01302.00	NUT	1

TRANSMISSION GEARBOX (EXTERNAL)

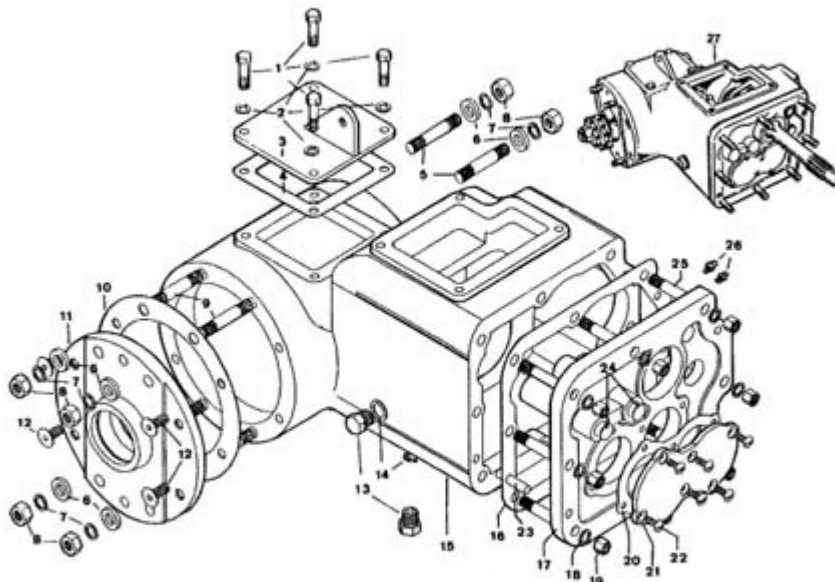


FIGURA	REFERENCIA	DENOMINACIÓN	CANTIDAD
001	603.08025.86	SCREW DIN933 M8x25	4
002	104.08000.00	WASHER DIN7980 D8	4
003	01.00384.00	COVER HANDHOLE	1
004	01.00385.00	PAPER GASKET	1
005	01.00383.01	STUD DIN939*	4
006	01.00345.00	WASHER DIN1441*	8
007	104.12000.00	WASHER DIN7980 D12	8
008	00.00130.00	NUT	8
009	01.00383.00	STUD DIN939*	4
010	01.00382.00	PAPER GASKET	1
011	01.00378.01	FLANGE	1
012	618.08020.86	SCREW DIN7991 M8x20	4
013	80.01035.00	SCREW DIN910*	1
014	107.14000.10	WASHER AL 14x20x1.5	2
015	01.00351.04	CASING	1
016	01.00368.01	PAPER GASKET	1
017	01.00350.02	FLANGE	1
018	104.10000.00	WASHER DIN7980 D10	8

TRANSMISSION GEARBOX (EXTERNAL)

FIGURA	REFERENCIA	DENOMINACIÓN	CANTIDAD
019	701.10000.66	NUT DIN934 M10x1.5	8
020	01.00367.01	PAPER GAKET	1
021	01.00364.01	COVER HANDHOLE	1
022	624.06015.86	SCREW	6
023	01.00349.00	PIN	2
024	01.00327.00	CAP	2
025	01.00371.01	STUD DIN939*	8
026	01.00365.00	SCREW DIN564*	2
027	45.00007.01	CONJ. CAJA C/V ISUZU COMP.	1
13A	10.00921.00	CAP M14X150 DIN908	1

TRANSMISSION GEARBOX (INTERNAL)

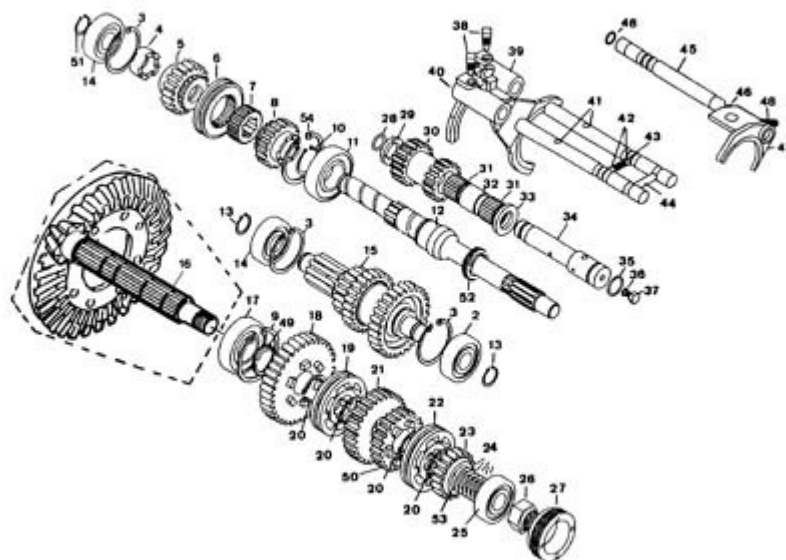


FIGURA	REFERENCIA	DENOMINACIÓN	CANTIDAD
001	45.00007.01	CONJ. CAJA C/V ISUZU COMP.	1
002	301.20015.01	BEARING DIN625	1
003	905.52000.00	RING 0,5 MM.	3
004	45.00356.00	BUSH	1
005	45.00365.00	GEAR z19	1
006	45.00354.00	COUPLING CYL/CYL	1
007	45.00374.00	COUPLING CYL/CYL	1
008	45.00358.00	GEAR z18	1
009	905.62000.00	RING 0,5 MM.	1
010	904.30000.00	RING 0,5 MM.	1
011	301.30016.00	BEARING DIN625	1
012	45.00353.01	SHAFT CAS/CIL	1
013	904.20000.00	RING 0,5 MM.	2
014	306.20015.00	BEARING DIN5412	2
015	45.00352RE00	SHAFT CAS/CAS	1
016	01.30000.01	CONICAL GEAR SET	1
017	320.30016.00	BEARING DIN5412	1
018	45.00371.00	GEAR	1

TRANSMISSION GEARBOX (INTERNAL)

FIGURA	REFERENCIA	DENOMINACIÓN	CANTIDAD
019	45.00373.00	COUPLING CYL/CYL	1
019	45.00373.10	COUPLING CYL/CYL	1
020	937.28002.00	RING 0,5 MM.	4
021	45.00370.00	GEAR z28	1
022	45.00385.00	COUPLING CYL/CYL	1
022	45.00385.10	COUPLING CYL/CYL	1
023	45.00372.00	GEAR z18	1
024	01.03902.00	WASHER ADJUST.	1
024	01.03912.00	WASHER ADJUST.	1
024	01.03913.00	WASHER ADJUST.	1
024	01.03914.00	WASHER ADJUST.	1
025	328.20015.00	BEARING DIN618	1
026	01.00394.02	NUT	1
027	01.00393.01	NUT	1
028	201.15025.50	O-RING DIN3770	1
029	45.00363.00	BUSH	1
030	45.00362.00	GEAR z17-15	1
031	308.20020.00	NEEDLES	2
032	45.00364.00	BUSH	1
033	45.00380.00	WASHER DIN126*	1
034	45.00355.00	SHAFT CAS/CAS	1
035	201.19002.50	O-RING DIN3770	1
036	101.06000.66	WASHER DIN125 D6	1
037	612.06010.86	SCREW DIN814	1
038	01.00319.00	SCREW DIN480	2
039	45.00315.00	ACC. FORK	1
040	45.00316.00	ACC. FORK	1
041	45.00314.00	SHAFT CIL/CIL	2
042	908.08000.00	BALL	3
043	00.03128.01	SPRING COMPRESSION	1
044	01.00320.00	PIN	1
045	45.00313.00	SHAFT CAS/CAS	1
046	201.11275.50	O-RING DIN3770	2
047	45.00317.00	ACC. FORK	1
048	15.00315.00	SPRING COMPRESSION	1
049	45.00386.01	BUSH	1

**TRANSMISSION
GEARBOX (INTERNAL)**

FIGURA	REFERENCIA	DENOMINACIÓN	CANTIDAD
049	45.00386.02	BUSH	1
050	45.00369.00	GEAR z23	1
051	937.20175.00	RING 0,5 MM.	1
052	202.34075.50	SEAL DIN3760	1
053	01.00386.00	WASHER DIN443*	1
054	905.62000.00	RING 0,5 MM.	1

TRANSMISSION DIFFERENTIAL

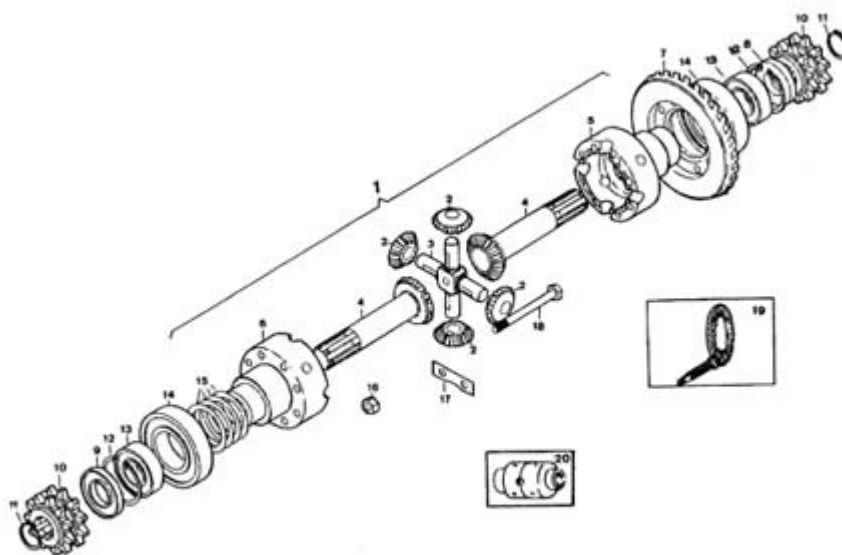


FIGURA	REFERENCIA	DENOMINACIÓN	CANTIDAD
001	01.00302RE02	DIFFERENTIAL WITHOUT CROWN	1
001	01.03000.02	DIFERENCIAL C/CORONA COMP.	1
002	01.00387.00	GEAR z12	4
003	01.00388.00	AXLES	1
004	00.00382.02	GEAR CONICAL	2
005	01.00376.02	CASING	1
006	01.00375.02	CASING	1
007	01.30000.01	CONICAL GEAR SET	1
008	202.25008.50	SEAL DIN3760	1
009	202.25007.50	SEAL DIN3760	1
010	02.00385.02	GEAR z11-11	2
011	904.25000.00	RING 0,5 MM.	2
012	905.52000.00	RING 0,5 MM.	2
013	301.25015.01	BEARING DIN625	2
014	301.40018.00	BEARING DIN625	2
015	01.03902.00	WASHER ADJUST.	1
016	01.01302.00	NUT	8
017	01.00389.00	PANEL	4

TRANSMISSION DIFFERENTIAL

FIGURA	REFERENCIA	DENOMINACIÓN	CANTIDAD
018	01.00380.00	SCREW DIN931*	8
019	01.30000.01	CONICAL GEAR SET	1
020	01.03010.02	CAJA DIFERENCIAL AJUST.	1
021	09.99007RE00	GASKET SET	1

TRANSMISSION SHIFT GEAR LEVERS

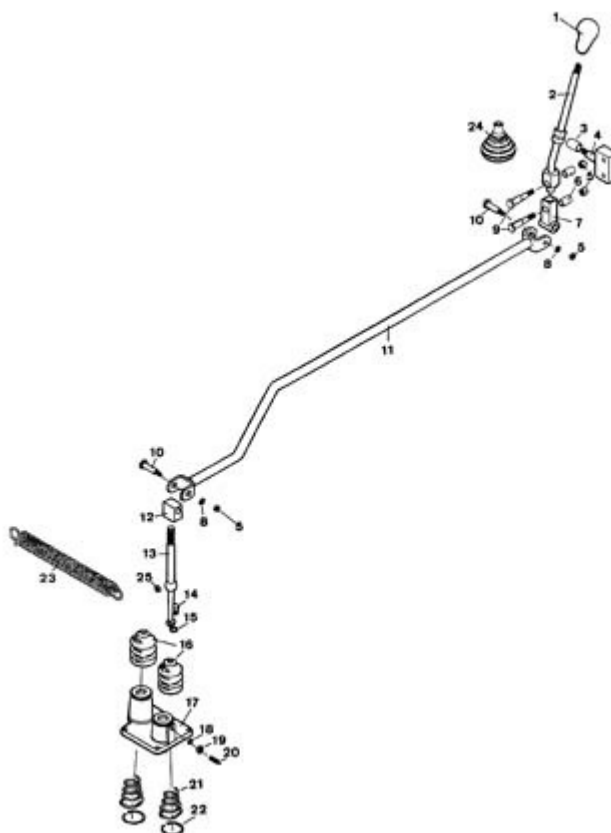


FIGURA	REFERENCIA	DENOMINACIÓN	CANTIDAD
001	01.00325.03	KNOB	1
002	46.00389.01	CONTROL LEVER	1
003	923.16230.00	BEARING	1
004	46.00396.00	SUPPORT ART.	1
005	701.10000.66	NUT DIN934 M10x1.5	2
006	923.12025.00	BEARING	2
007	46.00398.00	SUPPORT ART.	1
008	104.10000.00	WASHER DIN7980 D10	2
009	46.00393.00	AXLE CIL/ROS	2
010	09.84323.00	SHAFT	2
011	46.81323.03	BARRA. D21,3x1280 C/V	1
012	09.80313.00	SUPPORT ART.	1
013	09.80312.01	GEAR LEVER	1
014	00.02803.00	SCREW DIN910*	1
015	107.14000.10	WASHER AL 14x20x1.5	1
016	00.00326.00	DUST EXCLUDER	2
017	01.00310.00	FLANGE	1
018	104.10000.00	WASHER DIN7980 D10	1

TRANSMISSION SHIFT GEAR LEVERS

FIGURA	REFERENCIA	DENOMINACIÓN	CANTIDAD
019	701.09000.86	NUT	1
020	01.00312.00	SCREW DIN417*	1
021	01.00326.00	SPRING COMPRESSION	2
022	906.40000.00	WASHER	2
023	46.00322.01	SPRING TENSION	1
024	43.50349.00	DUST PROTECTOR	1
025	909.15018.00	RING 0,5 MM.	1

TRANSMISSION REVERSE CONTROL

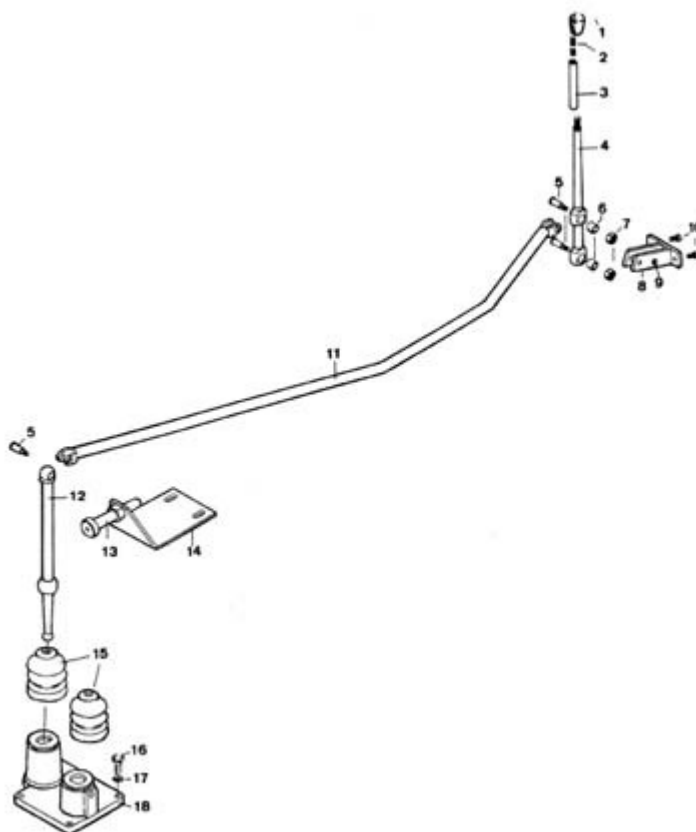


FIGURA	REFERENCIA	DENOMINACIÓN	CANTIDAD
001	01.00325.03	KNOB	1
002	15.01034.00	STUD DIN938* 41 M10x1,5	1
003	01.00324.02	TUBO MET. 100 M-M	1
004	01.00324.07	CONTROL LEVER	1
005	01.00309.00	SCREW DIN933*	2
006	01.00308.00	NYLON BEARING 11X16X15	2
007	701.08000.86	NUT	2
008	46.00318.00	SOP. ART. 6x30x80	1
009	104.08000.00	WASHER DIN7980 D8	2
010	608.06015.66	SCREW DIN85	2
011	46.00323.04	BARRA. D21x1257 INVERSOR	1
012	09.80321.02	GEAR LEVER	1
013	43.00315.00	SWITCH	1
014	46.00778.00	SOP. ANG. 40x75x110	1
015	00.00326.00	DUST EXCLUDER	1
016	603.08025.86	SCREW DIN933 M8x25	4
017	104.08000.00	WASHER DIN7980 D8	4
018	01.00310.00	FLANGE	1

TRANSMISSION FRONT AXLE

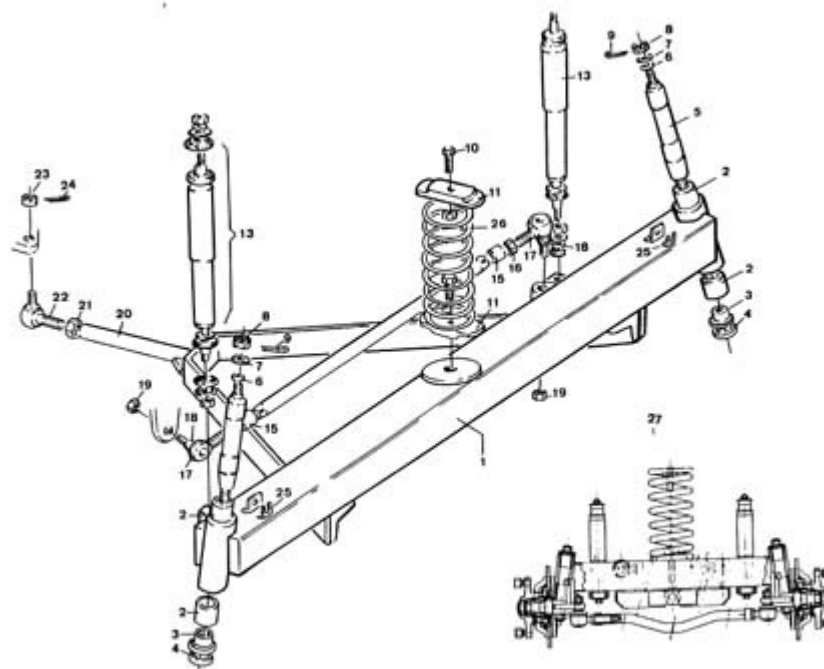


FIGURA	REFERENCIA	DENOMINACIÓN	CANTIDAD
001	46.06260.01	PUENTE FIJO C/CASQUILLO COMP	1
001	46.00626.02	CONJ. PUENTE DV-17 SOLD.	1
002	10.00628RE00	BEARING	4
003	322.30003.00	NEEDLE THRUST BEARING	2
004	926.30003.00	DISK AXIAL	2
005	10.00623.00	AXLE CPA/CPA	2
006	10.00634.00	CIR-CLIP EXT. DIN7980	2
007	10.00633.00	WASHER DIN1441*	2
008	710.14000.66	NUT	2
009	401.25030.60	PIN	2
010	603.14060.86	SCREW DIN933	2
011	46.06269.00	PRISIONERO MUELLE SUSPENSION	2
012	46.02001.00	SPRING COMPRESSION	1
013	46.02002.01	HYDR. DAMPER	2
014	46.01013.00	STEERING ROD	1
015	15.01015.00	BUSH	2
016	709.18000.66	NUT	2
017	15.01017.00	L BALL	2

TRANSMISSION FRONT AXLE

FIGURA	REFERENCIA	DENOMINACIÓN	CANTIDAD
018	15.10180.00	GUARD SWIVEL FITTING	2
019	711.14000.66	NUT DIN982 M14 8.8 K	2
020	46.00590.02	SOP. EJE DELANTERO	1
021	708.24000.66	NUT	1
022	16.01023.00	L BALL	1
023	710.14000.66	NUT	1
024	401.04030.60	SPLIT PIN DIN94 4x30	1
025	46.02003.00	SOP. GUIA TUBO	2
026	46.02001.00	SPRING COMPRESSION	1
027	46.00600.02	PUENTE DIRECTRIZ COMP.	1

TRANSMISSION

FRONT AXLE(HUBS AND DISC BRAKE)

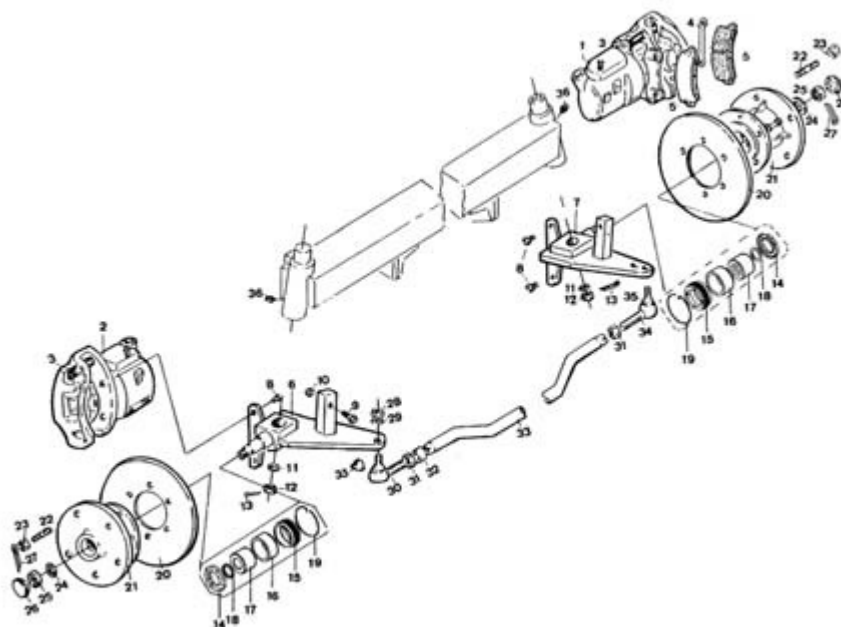


FIGURA	REFERENCIA	DENOMINACIÓN	CANTIDAD
001	46.00407RE00	CONJUNTOS PINZAS FRENO	1
002	46.00407RE00	CONJUNTOS PINZAS FRENO	1
004	46.00410.00	PANEL	1
005	46.00413.00	LINING BRAKESHOE	4
006	46.00640.03	STUB AXLE	1
007	46.00639.03	STUB AXLE	1
008	625.10025.86	SCREW DIN961	2
009	603.10060.86	SCREW DIN933	2
010	701.10000.66	NUT DIN934 M10x1.5	2
011	10.00632.00	WASHER DIN1440*	2
012	01.01315.00	NUT	2
013	401.25040.60	PIN	2
014	202.36008.50	SEAL DIN3760	2
015	46.00553.00	NUT	2
016	46.00552.12	TUBE MET.	2
017	330.25037.00	ROLLING BEARING	2
018	46.00552.20	MAT. TUBO MET. CIL.	2
019	10.00560.00	RING 0,5 MM.	2

TRANSMISSION

FRONT AXLE(HUBS AND DISC BRAKE)

FIGURA	REFERENCIA	DENOMINACIÓN	CANTIDAD
020	46.00551.00	DISK BRAKE	2
021	46.00550.11	WHEEL HUB	2
022	00.00587.00	STUD DIN939*	10
023	46.00588.00	NUT DIN982 M14x1,5	10
024	01.00632.00	WASHER DIN1440*	2
025	01.01314.10	NUT	2
026	00.05806.00	CAP	2
027	401.25040.60	PIN	2
028	711.14000.66	NUT DIN982 M14 8.8 K	5
029	101.14000.66	WASHER DIN125 D14	2
030	15.01018.00	L BALL	1
031	15.01019.00	NUT	2
032	15.01015.00	BUSH	2
033	15.00614.01	STEERING ROD	1
034	15.01017.00	L BALL	1
035	15.10180.00	GUARD SWIVEL FITTING	2
036	901.08000.33	GREASER DIN71412-A M8x1,25	2

TRANSMISSION

REAR AXLE

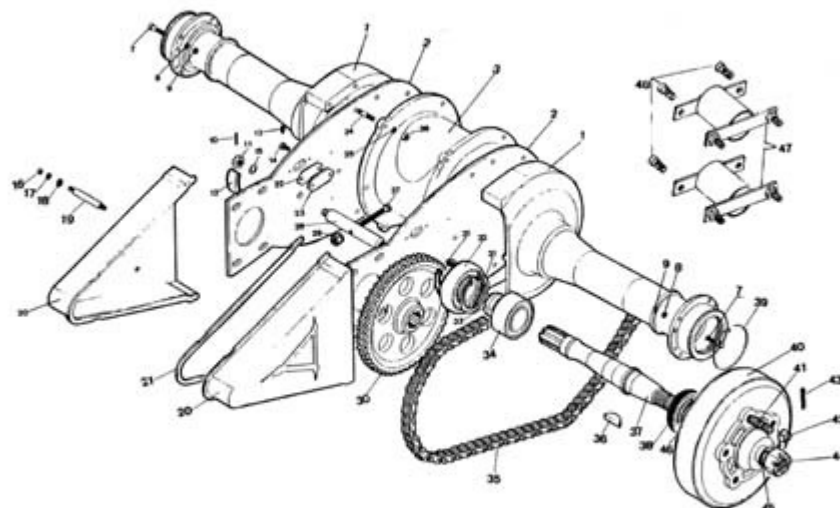


FIGURA	REFERENCIA	DENOMINACIÓN	CANTIDAD
001	02.00400.01	ASCLE HOUSING	1
002	01.00432.00	PLATE	1
003	09.00426.00	SEPARATOR CASING	1
004	02.00182.00	PANEL	2
005	101.14000.66	WASHER DIN125 D14	1
006	14.00183.00	STUD DIN939*	1
007	43.08034.00	SCREW DIN912*	4
008	104.08000.00	WASHER DIN7980 D8	2
009	711.08000.66	NUT DIN982 M8	2
010	401.25030.60	PIN	2
011	01.01312.00	NUT	2
012	00.00431.00	CORK GASKET	2
013	901.08000.33	GREASER DIN71412-A M8x1,25	2
014	603.09030.86	SCREW DIN933	2
015	101.14000.66	WASHER DIN125 D14	4
016	701.08000.66	NUT DIN934 M8X1,25	4
017	104.08000.00	WASHER DIN7980 D8	4
018	101.08000.66	WASHER DIN125 D8	4

TRANSMISSION

REAR AXLE

FIGURA	REFERENCIA	DENOMINACIÓN	CANTIDAD
019	00.01307.02	AXLE ROS/ROS	2
020	00.00420.00	GUARD TRANS.	2
021	00.00421.00	CORK GASKET	2
022	00.00430.00	PAPER GASKET	2
023	00.00427.00	COVER HANDHOLE	2
024	00.00412.00	STUD DIN939*	4
025	104.10000.00	WASHER DIN7980 D10	16
026	01.01303.00	NUT	16
027	603.10080.86	SCREW DIN933	1
028	00.00422.00	TENSIONER	1
029	01.00425.00	NUT	1
030	46.00411.00	GEAR	2
031	905.80000.00	RING 0,5 MM.	4
032	306.40018.00	BEARING DIN5412	2
033	02.00415.00	DRIVESHAFT NUT DIN547	2
034	301.45019.01	BEARING DIN625	2
035	46.00402.00	CHAIN	2
036	02.00519.01	KEY DIN6888 10x16x45	2
037	02.00414.00	DRIVE SHAFT (150)	2
038	02.00417.00	NUT DIN547 M88x1,5 TROMPET	2
039	02.00419.00	RING DIN471 E93x3	2
040	02.00518.04	BRAKE DRUMP (HYDRAULIC)	2
041	00.00587.00	STUD DIN939*	10
042	46.00588.00	NUT DIN982 M14x1,5	10
043	401.04040.60	PIN	2
044	01.01319.00	NUT DIN935 M30x2x30	2
045	101.30000.66	WASHER DIN125 D30	2
046	202.45007.50	SEAL DIN3760 45x55x7	2
047	46.00432.00	PANEL	2
048	610.08012.86	SCREW DIN6912	4

CHASSIS

CHASSIS AND SHIELDS

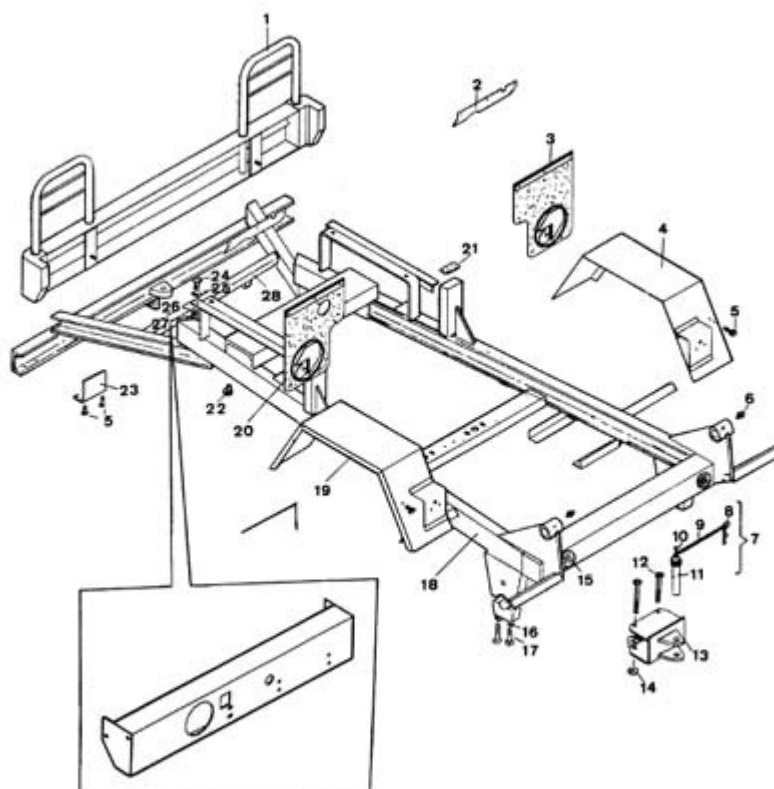


FIGURA	REFERENCIA	DENOMINACIÓN	CANTIDAD
001	46.00374.00	BUMPER	1
002	46.00904.00	REFUERZO	2
003	46.00903.02	FALDON 5x330x400 GOMA IZQ.	2
004	46.00806.02	MUDGUARD	1
005	603.06015.86	SCREW DIN933 M6x15	12
006	901.08000.33	GREASER DIN71412-A M8x1,25	2
007	15.08350RE00	AXLE CPA/GRA	1
008	15.00836.00	PIN DIN11024 R4	1
009	15.00834.00	CHAIN	1
010	603.05010.86	SCREW DIN933 M5x10	1
011	15.00835.00	AXLE CPA/GRA 25x30x135	1
012	604.14140.86	SCREW DIN931	2
013	46.07056.01	CONJ. ARRASTRE Y ARTICULACION	1
014	701.14000.86	NUT	2
015	46.01532.00	RED REFLECTOR	2
016	104.16000.00	CIR-CLIP EXT. DIN7980	4
017	604.16080.86	SCREW DIN931	4
018	46.00705.22	BASTIDOR 1500X2750.5 DV-17	1

CHASSIS

CHASSIS AND SHIELDS

FIGURA	REFERENCIA	DENOMINACIÓN	CANTIDAD
019	46.00807.02	MUDGUARD	1
020	46.00903.00	FALDON 5x330x400 GOMA DER.	1
021	46.01230RE00	BUTT	2
022	08.00107.01	BUTT	2
023	46.01531.01	SOP. PAS. FOR. 150x150x30	2
024	605.10024.66	SCREW DIN603	2
025	112.10000.66	WASHER DIN9021 D10	2
026	104.10000.00	WASHER DIN7980 D10	2
027	701.10000.66	NUT DIN934 M10x1.5	2
028	46.00730.10	SOP. ANG. 78x138x900 PEDALES	1

BRAKE ACTIVATION PARKING BRAKE

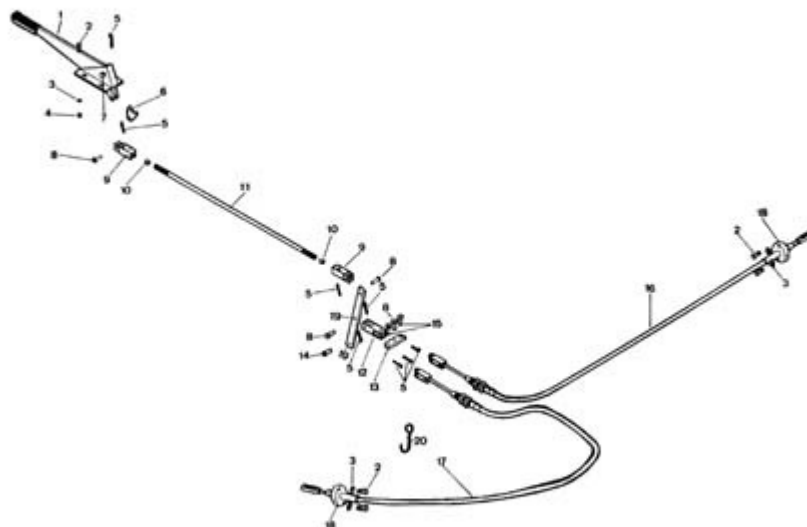


FIGURA	REFERENCIA	DENOMINACIÓN	CANTIDAD
001	00.00540.00	ACC.LEVER	-1
002	603.08020.86	SCREW DIN933 M8x20	8
003	104.08000.00	WASHER DIN7980 D8	4
004	701.08000.66	NUT DIN934 M8X1,25	4
005	401.02025.60	PIN DIN94 2x25	7
006	00.00559.00	GATILLO 7x33x46	1
007	00.00558.00	AXLE CIL/CPA	1
008	01.00514.01	AXLE CIL/CPA 14x8x28	2
009	15.00715.00	ARTICULATED FORK	2
010	701.10000.66	NUT DIN934 M10x1.5	2
011	46.00513.04	VARILLA REC.10 540 M-M	1
012	15.00758.00	ACC. FORK	1
013	43.00766.00	STRIP SUPPORT	1
014	01.00514.00	AXLE CIL/CPA	1
015	01.00514.02	AXLE CIL/CPA	2
016	43.00706.01	BRAKE CABLE D3.5X1215	1
017	44.00706.02	BRAKE CABLE	1
018	43.00708.00	FLANGE	2

BRAKE ACTIVATION

PARKING BRAKE

FIGURA	REFERENCIA	DENOMINACIÓN	CANTIDAD
019	46.00789.00	LEVER	1
020	09.00715.00	SOP. GUIA 4X22X83 CABLE FRENO	1

STEERING

STEERING

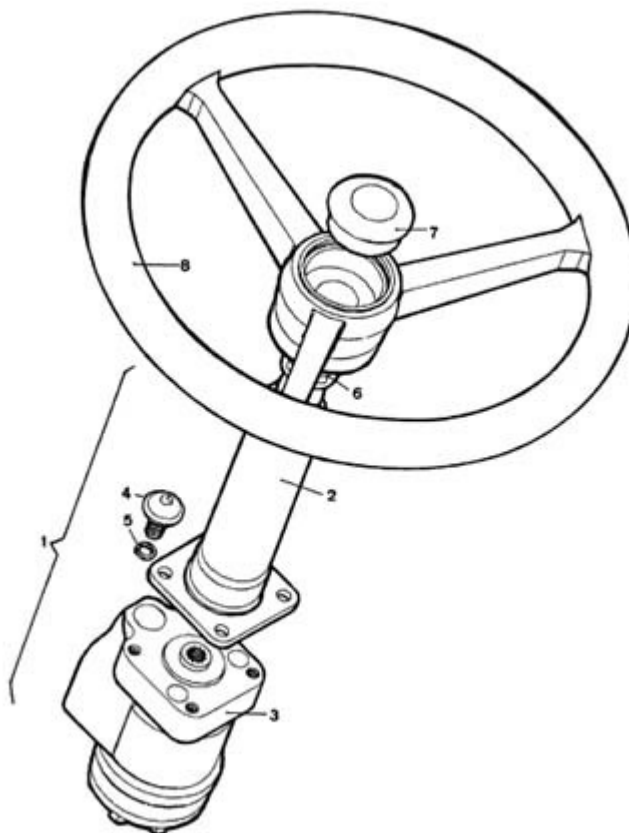


FIGURA	REFERENCIA	DENOMINACIÓN	CANTIDAD
001	37.00608.01	COLUMNA DIREC. C/EJE COMP.	1
002	09.10680.00	STEERING COLUMM	1
003	37.06130.00	STEERING VALVE	1
003	45.01003.00	VALVE	1
003	37.01002.00	STEERING VALVE	1
004	630.10030.96	SCREW ISO7380 M10x30	4
005	104.10000.00	WASHER DIN7980 D10	4
006	104.16000.00	CIR-CLIP EXT. DIN7980	1
007	00.00626.04	TRIM	1
008	09.01016.00	WHEEL STEERING	1

STEERING

STEERING CYLINDER MOUNTING REAR AXLE

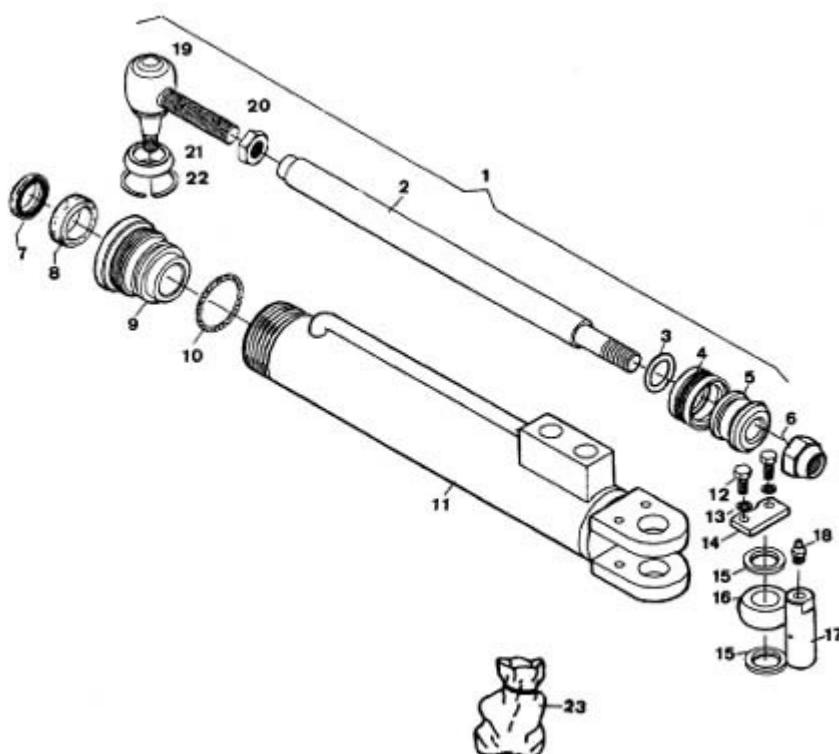


FIGURA	REFERENCIA	DENOMINACIÓN	CANTIDAD
001	46.00670.03	CYLINDER D/E	1
002	46.00677.01	VASTAGO CILINDRO	1
003	201.01525.50	JUNTA TORICA 15,3X2,4	1
004	207.04032.50	JUNTA ESTAN. COMPAC. 40X32	1
005	10.00675.02	PISTON	1
006	708.16000.66	NUT	1
007	228.02208.50	WIPER RING	1
008	229.02208.50	GASKET DIN6505	1
009	10.00676.01	TAPA GUIA	1
010	201.03335.50	O-RING DIN3770	1
011	10.00671.03	TUBO CILINDRO	1
012	603.06015.86	SCREW DIN933 M6x15	2
013	104.06000.00	WASHER DIN7980 D6	2
014	15.00832.00	PANEL	1
015	10.00684.00	WASHER DIN126*	2
016	913.20012.00	BUSHING	1
017	31.00322.00	0	1
018	901.08000.33	GREASER DIN71412-A M8x1,25	1

STEERING**STEERING CYLINDER MOUNTING REAR AXLE**

FIGURA	REFERENCIA	DENOMINACIÓN	CANTIDAD
019	01.00631.00	ROTULA DIRECCION DERECHA	1
020	01.01307.00	NUT	1
021	01.00619.00	DUST EXCLUDER	1
022	01.06300.00	SPRING COMPRESSION	1
023	46.99670RE03	GASKET SET	1

WHEEL WHEELS

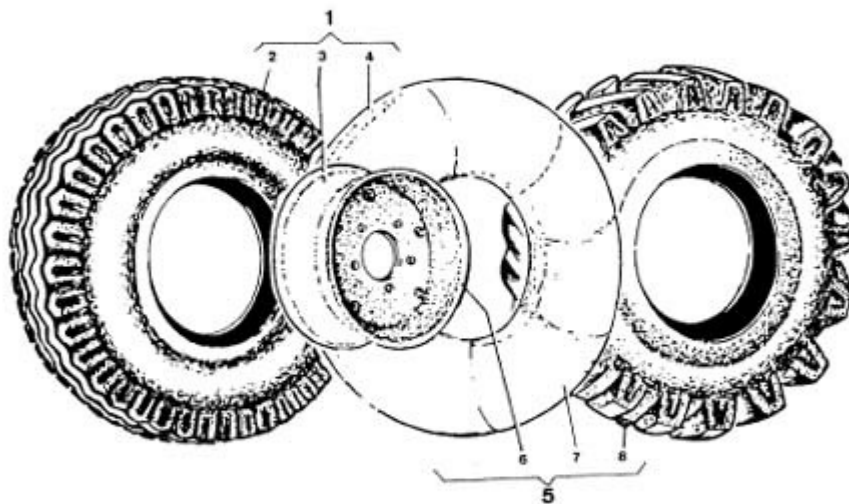


FIGURA	REFERENCIA	DENOMINACIÓN	CANTIDAD
001	46.00901.00	WHEEL RIM	4
002	46.00921.00	TYRE LS	4
003	46.00920.00	WHEEL RIM 12` 7.00	4
004	46.00922.00	TUBE	4
005	46.00902.00	WHEEL RIM	2
006	46.00920.00	WHEEL RIM 12` 7.00	2
007	46.00922.00	TUBE	4
008	46.00923.00	TYRE TT	2

BODY SEAT



FIGURA	REFERENCIA	DENOMINACIÓN	CANTIDAD
001	43.00790.03	DRIVERS SEAT	1
002	603.08025.80	SCREW DIN933	4
003	43.00796.00	SUPLEMENTO 15X30X265	4
004	603.08035.86	SCREW DIN933	8

MACHINE OPERATION TOOLS

SKIP LIFTING RAM

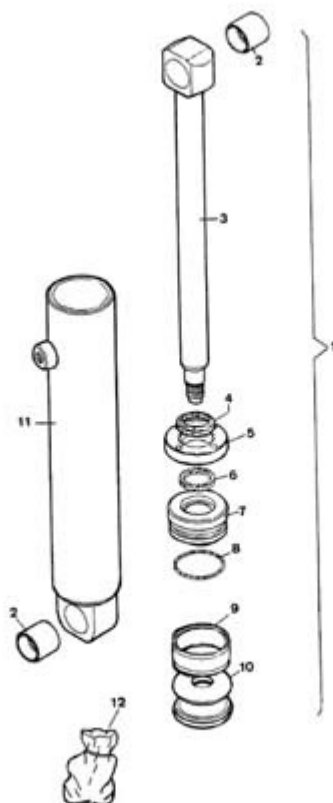


FIGURA	REFERENCIA	DENOMINACIÓN	CANTIDAD
001	08.00500.09	CYLINDER D/E	1
002	08.00527.00	BEARING	2
003	08.00525.01	SPINDLE	1
004	203.30008.50	WIPER RING	1
005	08.00530.01	NUT	1
006	217.30006.50	GASKET DIN6505	1
007	08.00528.02	GUIDE	1
008	201.05153.50	O-RING DIN3770	1
009	207.63028.50	GASKET	2
010	08.00521.04	PISTON	1
011	09.00520.02	CUERPO CIL. 63x468 COMP	1
012	09.99500RE00	GASKET SET	1

MACHINE OPERATION TOOLS

REGULATOR VALVE

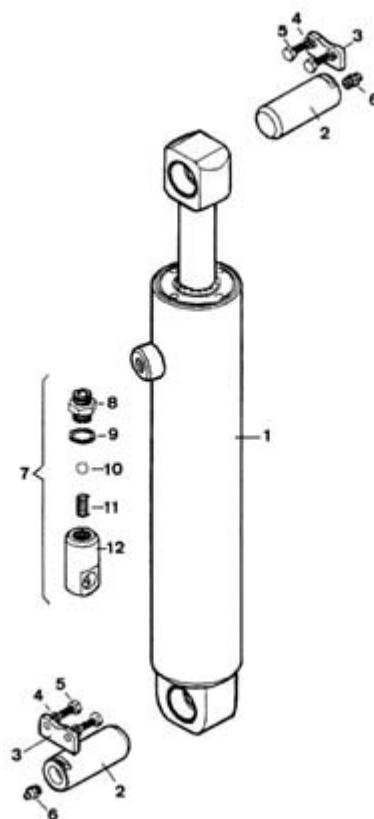


FIGURA	REFERENCIA	DENOMINACIÓN	CANTIDAD
001	08.00500.09	CYLINDER D/E	1
002	15.01216.00	SHAFT CIL/COA	2
003	15.00832.00	PANEL	2
004	104.06000.00	WASHER DIN7980 D6	4
005	603.06015.86	SCREW DIN933 M6x15	4
006	901.08000.33	GREASER DIN71412-A M8x1,25	2
007	09.01203RE01	VALVE	1
008	09.01211.00	NIPPLE M/M	1
009	08.00317.00	METALLIC GASKET BUNA D3/8	1
010	908.11000.00	BALL	1
011	09.01212.00	SPRING COMPRESSION	1
012	09.01210.01	VALVE BODY	1

MACHINE OPERATION TOOLS PLATFORM(STANDAR)

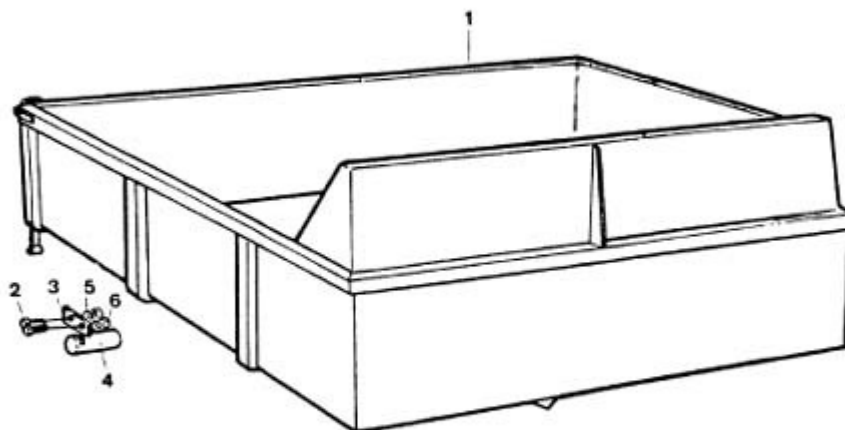


FIGURA	REFERENCIA	DENOMINACIÓN	CANTIDAD
001	46.00722.40	PLATAFORMA CAJA 80X1435X1950	1
001	46.00722.06	PLATAFORMA HIDRAULICA	1
002	603.06015.86	SCREW DIN933 M6x15	4
002	46.00722.34	PUERTA DER.	1
003	46.00722.39	PUERTA TRASERA	1
003	15.00832.00	PANEL	2
004	09.00135.00	SHAFT CIL/COA	2
004	46.00722.35	PUERTA IZQ.	1
005	46.00722.37	PUERTA DELANTERA	1
005	104.06000.00	WASHER DIN7980 D6	4
006	701.06000.86	NUT	4
006	603.06015.86	SCREW DIN933 M6x15	4
007	104.06000.00	WASHER DIN7980 D6	4
008	701.06000.66	NUT DIN934 M6X1	4
009	901.08000.33	GREASER DIN71412-A M8x1,25	2
010	09.00135.00	SHAFT CIL/COA	2
011	15.00832.00	PANEL	2
012	46.00722.31	CAJA. PUERTAS ABATIBLES	1

MACHINE OPERATION TOOLS

DRIVER CAB

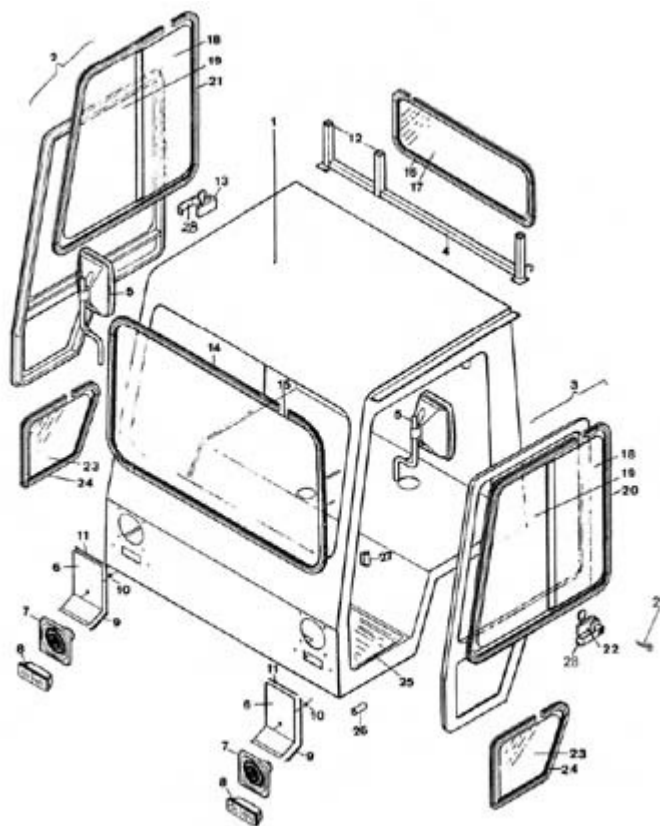


FIGURA	REFERENCIA	DENOMINACIÓN	CANTIDAD
001	46.07240.11	PROT. CONDUCTOR 1500x1575x1220	1
001	46.07240.14	PROT. CONDUCTOR 1500x1575x1220	1
002	46.07240.12	PUERTA DERECHA	1
003	46.07240.13	PUERTA IZQ.	1
004	46.00383.00	SOP. PAS. FOR. 60x240x1290 CAB	1
005	46.07298.00	DRIVING MIRROR	2
006	46.00727.02	PROT. LAMPARA 100x180x280	2
007	31.01321.10	BEACON	2
008	46.01323.02	PILOT	2
009	46.10789.10	PERFIL GOMA 8X15X350	2
010	46.00810.00	KNOB	2
011	46.00851.00	PERFIL GOMA 8X15X155	4
012	46.00373.00	TAPA. 13x30x30 PLAS.	3
013	46.07280.00	LOCK	1
014	46.07287.00	PROFILE	1
015	46.07282.00	GLASS	1
016	46.07288.00	PROFILE	1
017	46.07283.00	GLASS	1

MACHINE OPERATION TOOLS

DRIVER CAB

FIGURA	REFERENCIA	DENOMINACIÓN	CANTIDAD
018	46.07284.00	GLASS	2
019	46.07285.00	GLASS	2
020	46.07289.00	GLASS DOOR FRAME RIGHT	1
021	46.07290.00	VENTANILLA	1
022	46.07281.00	LOCK	1
023	46.07286.00	GLASS	2
024	46.07291.00	PERFIL GOMA PUERTA	2
025	46.07299.00	ALFOMBRA CABINA	1
026	10.12445.00	TUBO MET.	4
027	46.07239.00	BISAGRA D12x40 HEM.	2
028	46.07279.00	KNOB	2
029	46.07294.00	LLAVE PUERTA CABINA	1

MACHINE OPERATION TOOLS CABIN(OPTIONAL)

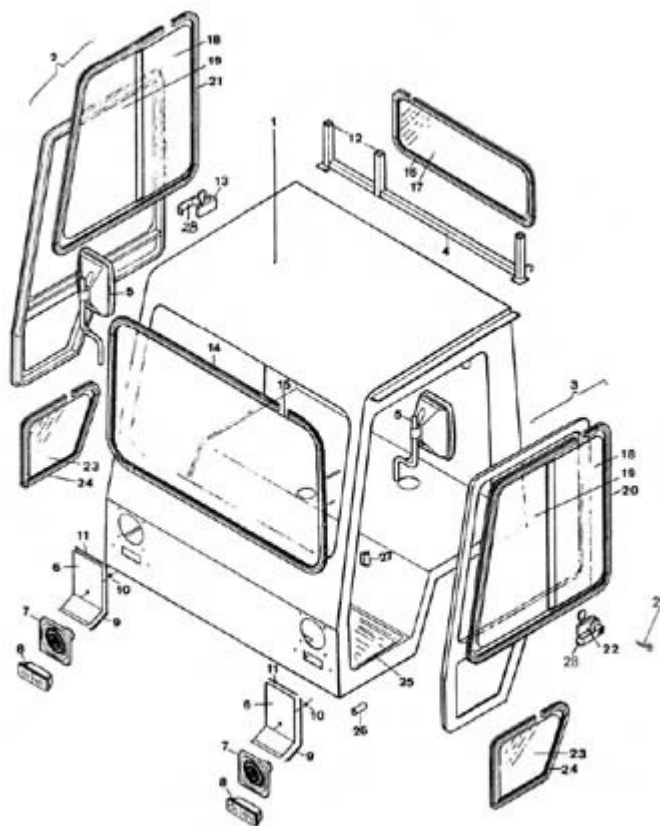


FIGURA	REFERENCIA	DENOMINACIÓN	CANTIDAD
001	46.07242.03	CABINA 1220x1500x1575	1
002	46.72441.00	0	1
003	46.72442.00	0	1
004	46.00465.00	0	2
005	46.00464.00	LOCK	1
006	46.00456.00	ABSORBENTE ACUSTICO PUERTA DER	1
007	46.00466.00	0	1
008	46.00454.00	ABSORBENTE ACUSTICO	1
009	46.00455.00	ABSORBENTE ACUSTICO	1
010	46.00467.00	0	1
011	46.04681.00	PAWL	2
012	46.04682.00	BASE ASIENTO	2
013	46.04683.00	TOPE GOMA	2
014	472.00004.00	MAT. PERFIL GOMA 8x10	2
015	46.00451.00	ABSORBENTE ACUSTICO	1
016	46.00450.00	ABSORBENTE ACUSTICO TECHO	1
017	46.00452.00	ABSORBENTE ACUSTICO LATERAL DE	1
018	46.00453.00	ABSORBENTE ACUSTICO LATERAL IZ	1

MACHINE OPERATION TOOLS CABIN(OPTIONAL)

FIGURA	REFERENCIA	DENOMINACIÓN	CANTIDAD
019	46.72432.00	CRISTAL VENTANA IZQ. COMPLETO	1
020	472.00003.00	MAT. PERFIL GOMA 18,5x23,5	1
021	46.72432.00	CRISTAL VENTANA IZQ. COMPLETO	1
022	46.00463.00	LOCK	1
023	46.00457.00	ABSORBENTE ACUSTICO PUERTA IZQ	1

MACHINE OPERATION TOOLS CONTAINER(DV17.C)

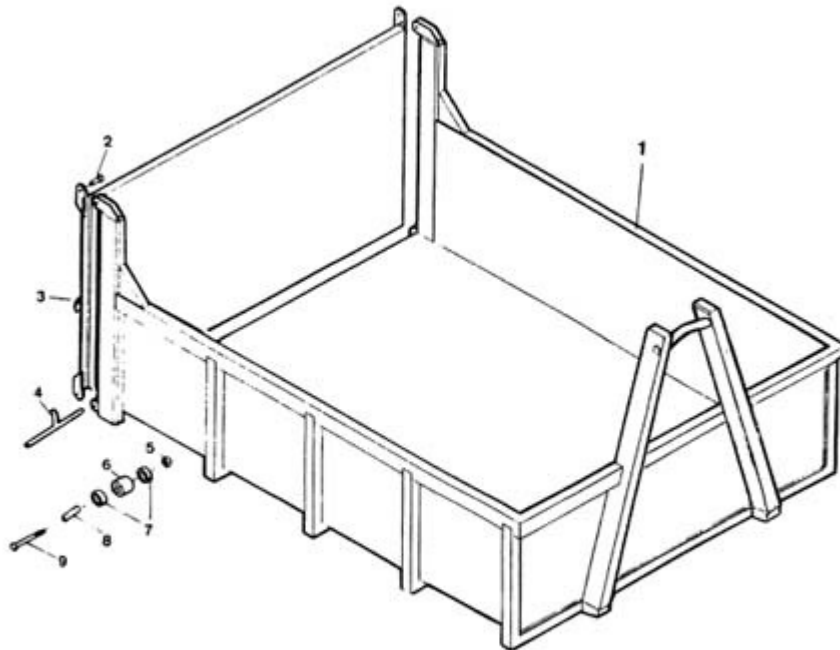


FIGURA	REFERENCIA	DENOMINACIÓN	CANTIDAD
001	46.50722.00	BOX.	1
002	46.50722.10	EJE CIL/CIL 14x20x75	2
003	46.00722.10	CIERRE	2
004	46.00722.09	BISAGRA	2
005	711.12000.66	NUT DIN982 M12	2
006	46.50716.00	ROLLER	2
007	309.20014.00	BEARING DIN625	4
008	46.50715.00	SHAFT CIL/CIL	2
009	604.12100.86	SCREW DIN931 M12x100	2

MACHINE OPERATION TOOLS

PORT-CONTAINERS(DV17.C)

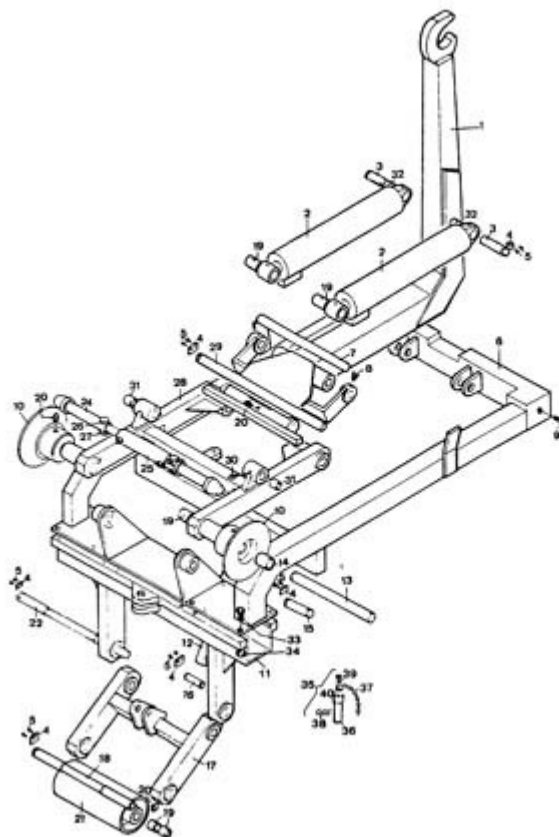


FIGURA	REFERENCIA	DENOMINACIÓN	CANTIDAD
001	46.50300.00	BRAZO. ENGANCHE CAJA	1
002	46.50102.00	KIT	2
003	16.01228.00	SHAFT CIL/COA	2
004	15.00832.00	PANEL	2
005	603.06015.86	SCREW DIN933 M6x15	4
006	46.50600.00	Chassis	1
007	46.50315.00	SHAFT CIL/CIL	1
008	14.00137.01	SCREW DIN933*	2
009	604.18120.86	SCREW DIN931 M18x120	2
010	46.50120.00	*RODILLO	2
011	46.50200.00	CLAMP	1
012	46.50105.00	CILINDRO D/E	1
013	46.50115.00	*EJE	2
014	08.00527.00	BEARING	4
015	46.50208.00	EJE CIL/CIL 112.5X22	1
016	46.50408.00	EJE CIL/CIL	1
017	46.50400.00	CONJ. BRAZO RODILLO	1
018	46.50409.00	SHAFT CIL/CIL	1

MACHINE OPERATION TOOLS

PORT-CONTAINERS(DV17.C)

FIGURA	REFERENCIA	DENOMINACIÓN	CANTIDAD
019	923.30050.00	BEARING	5
020	903.08000.33	GREASER DIN71412-B	3
021	46.50410.00	RODILLO* 133x327	1
022	46.50207.00	SHAFT CIL/CIL	1
024	46.50512.00	EJE	2
025	46.50104.01	CYLINDER D/E	1
026	603.14050.86	SCREW DIN933	2
027	701.14000.86	NUT	2
028	46.50500.00	CONJ. ARTICULACION	1
029	46.50509.00	SHAFT CIL/CIL	1
030	901.08000.33	GREASER DIN71412-A M8x1,25	2
031	923.35060.00	BEARING	2
032	923.35035.00	BEARING	2
033	603.12035.86	SCREW DIN933	12
034	701.12000.66	NUT DIN934 M12x1.75	12
035	15.08350RE00	AXLE CPA/GRA	-1
036	15.00835.00	AXLE CPA/GRA 25x30x135	1
037	15.00834.00	CHAIN	1
038	15.00836.00	PIN DIN11024 R4	1
039	603.05015.86	SCREW DIN933	1
040	701.05000.86	NUT	1

MACHINE OPERATION TOOLS CABIN(OPTIONAL)

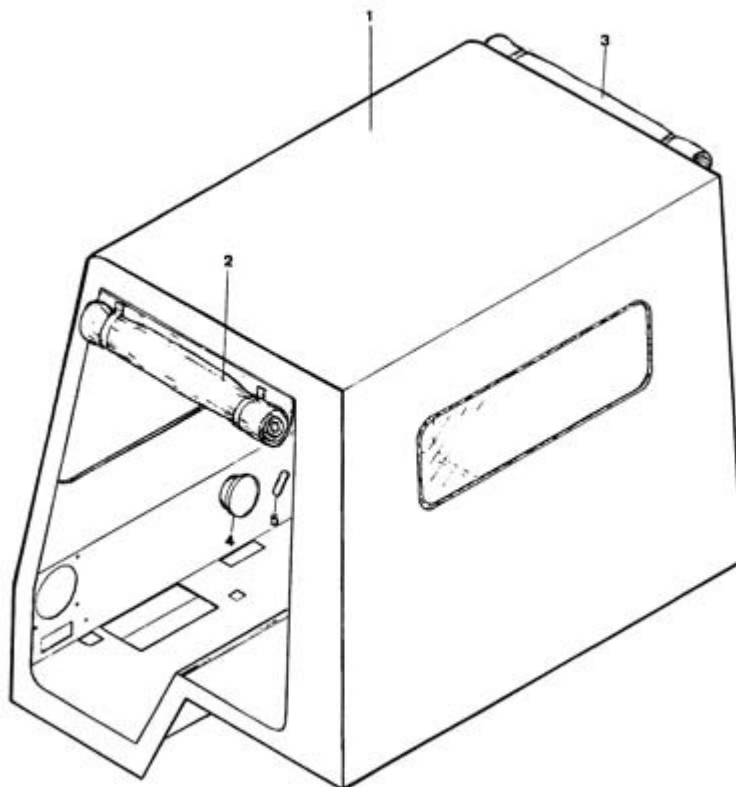


FIGURA	REFERENCIA	DENOMINACIÓN	CANTIDAD
001	46.07240.10	PROT. CONDUCTOR 1220x1500x1575	1
002	46.72433.01	LONA PUERTA IZQ.	1
003	46.72444.01	LONA PUERTA DERECHA	1
004	46.00350.00	TAPON. D75x10	2
005	46.00367.00	TAPON. 40x20x23	1

HYDRAULIC INSTALLATION HYDRAULIC DIAGRAM INSTALLATION

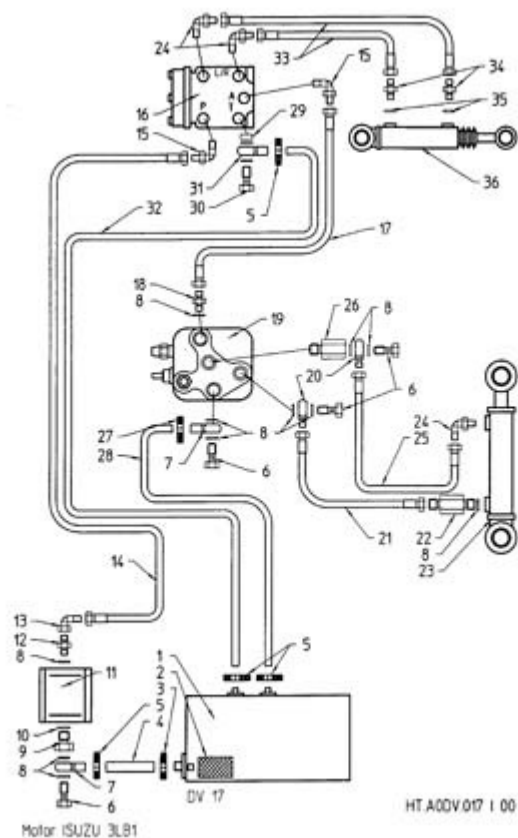


FIGURA	REFERENCIA	DENOMINACIÓN	CANTIDAD
001	46.01240.01	TANK	1
002	02.01432.01	COVER HANDHOLE	1
003	912.32050.66	CLAMP DIN3017	1
004	15.01615.00	TUBO GOMA B/P 15x25x1124	1
005	912.20032.00	CLAMP	1
006	08.00315.00	NIPPLE SCREW SIM.	1
007	08.00297.01	NIPPLE	1
008	08.00317.00	METALLIC GASKET BUNA D3/8	1
009	08.00314.00	NIPPLE M/H	1
010	08.00316.00	METALLIC GASKET BUNA D1/2 G	1
011	15.01157.00	HYDR. PUMP (ISUZU)	1
012	08.00317.00	METALLIC GASKET BUNA D3/8	1
013	15.01355.00	ELBOW C90LM/H NIPPLE	1
014	51.01442.00	HOSE R2T1/2	1
015	43.01454.00	ELBOW C90M/M NIPPLE	1
016	37.06130.00	STEERING VALVE	1
017	46.02070.00	TUBO R2T1/2 2070x1/2TL-C90T	1
018	08.00313.00	FITTING M/M 1/2 G-3/8 G	1

HYDRAULIC INSTALLATION

HYDRAULIC DIAGRAM INSTALLATION

FIGURA	REFERENCIA	DENOMINACIÓN	CANTIDAD
019	46.00330.00	DISTRIBUIDOR 1E	1
020	08.00298.00	NIPPLE O/M	1
021	01.01452.00	HOSE R1T3/8	1
022	09.01203RE01	VALVE	1
023	08.00500.06	CYLINDER D/E	1
024	45.01453.00	ELBOW C90MO/M NIPPLE	1
025	46.01950.00	HOSE R1T3/8	1
026	10.01352.00	NIPPLE M/H	1
027	912.20032.00	CLAMP	1
028	16.01378.00	TUBO GOMA B/P 15x25x400	1
029	14.01315.00	BUSH	1
030	10.01382.00	NIPPLE SCREW SIM.	1
031	08.00297.01	NIPPLE O/TB	1
032	46.02420.00	TUBO GOMA B/P 15x25x2500	1
033	10.01356.00	HOSE R1T3/8	1
034	19.00720.00	NIPPLE M/M	1
035	28.00341.00	METALLIC GASKET BUNA D1/4	1
036	46.00670.03	CYLINDER D/E	1

HYDRAULIC INSTALLATION HYDRAULIC INSTALLATION(CLAMPS)

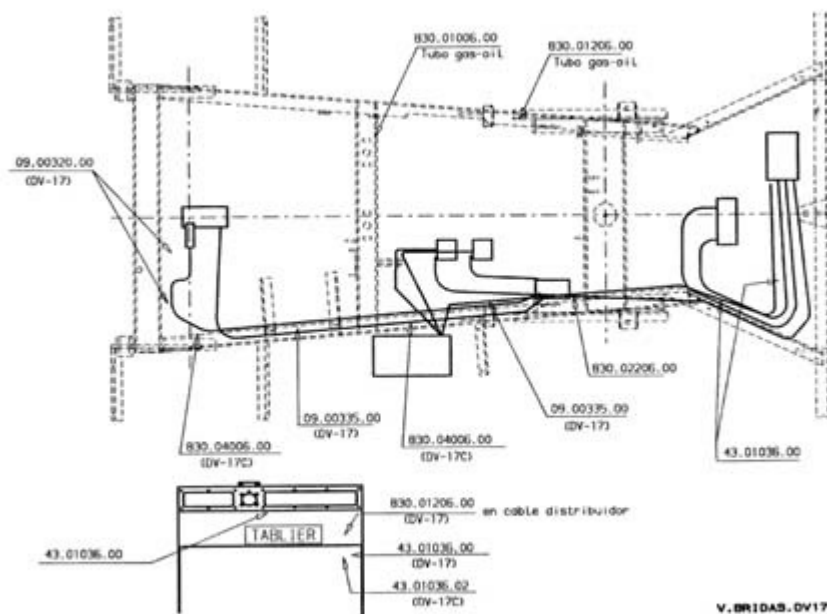


FIGURA	REFERENCIA	DENOMINACIÓN	CANTIDAD
001	09.00320.00	CLAMP LOOP	1
002	830.01006.00	CLAMP LOOP D10x6	1
003	830.01206.00	CLAMP LOOP	2
004	43.01036.00	CLAMP DIN72573	3
005	830.02206.00	CLAMP LOOP	1
006	09.00335.00	CLAMP DIN72573	2
007	830.04006.00	CLAMP LOOP D40x6	2
008	43.01036.02	CLAMP LOOP	1

HYDRAULIC INSTALLATION

HYDRAULIC DIAGRAM INSTALLATION(DV17.C)

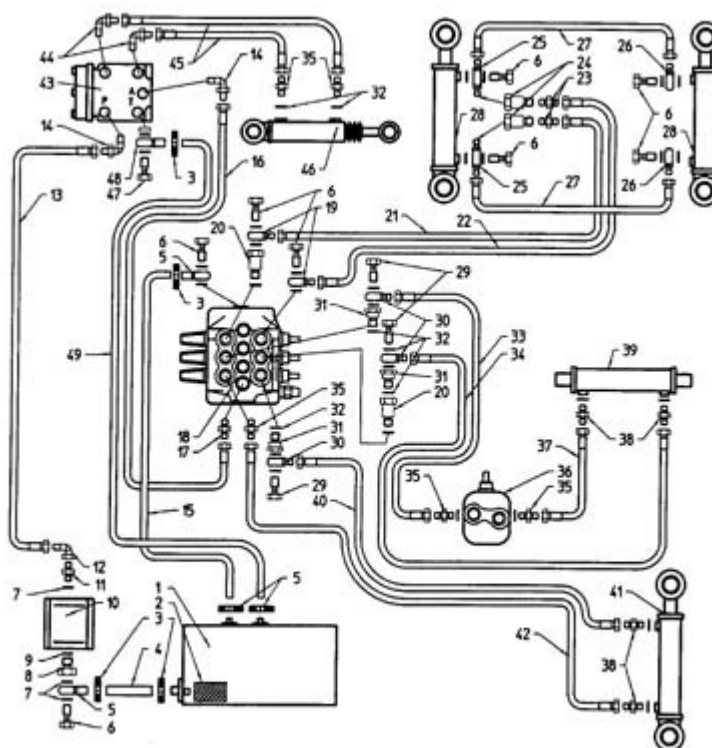


FIGURA	REFERENCIA	DENOMINACIÓN	CANTIDAD
001	46.01240.01	TANK	1
002	09.00630.61	OIL FILTER ASP. 25 L/MIN	1
003	912.32050.66	CLAMP DIN3017	2
004	15.01615.00	TUBO GOMA B/P 15x25x1124	1
005	08.00297.00	NIPPLE O/TB	2
006	08.00315.00	NIPPLE SCREW SIM.	6
007	08.00317.00	METALLIC GASKET BUNA D3/8	3
008	08.00314.00	NIPPLE M/H	1
009	08.00316.00	METALLIC GASKET BUNA D1/2 G	1
010	15.01157.00	HYDR. PUMP (ISUZU)	1
011	08.00313.00	FITTING M/M 1/2 G-3/8 G	1
012	15.01355.00	ELBOW C90LM/H NIPPLE	1
013	51.01442.00	HOSE R2T1/2	1
014	43.01454.00	ELBOW C90M/M NIPPLE	2
015	16.01378.00	TUBO GOMA B/P 15x25x400	1
016	46.02070.00	TUBO R2T1/2 2070x1/2TL-C90T	1
017	08.00313.00	FITTING M/M 1/2 G-3/8 G	1
018	46.50109.01	CONTROL VALVE 3E	1

HYDRAULIC INSTALLATION

HYDRAULIC DIAGRAM INSTALLATION(DV17.C)

FIGURA	REFERENCIA	DENOMINACIÓN	CANTIDAD
019	08.00298.00	NIPPLE O/M	2
020	10.01352.00	NIPPLE M/H	1
021	08.00318.00	HOSE R1T3/8	1
022	14.01326.00	HOSE R1T3/8	1
023	08.00319.00	NIPPLE M/M	2
024	46.50106.00	VALVE	2
025	08.00298.00	NIPPLE O/M	2
026	08.00298.00	NIPPLE O/M	2
027	15.01234.00	HOSE R1T3/8	2
028	46.50102.00	KIT	1
029	28.00340.00	SIMPLE SCREW FITTING 1/4 Gx26	2
030	28.00339.00	NIPPLE O/M	2
031	28.00338.00	NIPPLE M/H	2
032	28.00341.00	METALLIC GASKET BUNA D1/4	4
033	46.50112.01	HOSE R1T1/4	1
034	46.50113.00	HOSE R1T1/4	1
035	19.00720.00	NIPPLE M/M	5
036	54.01805.00	CONTROL VALVE 1E	1
037	45.01491.02	HOSE R1T1/4	1
038	28.00313.00	NIPPLE	4
039	45.50104.01	HOSE	1
040	46.50110.01	HOSE R1T1/4	1
041	46.50105.00	CILINDRO D/E	1
042	10.18000.00	HOSE R1T1/4	1
043	37.06130.00	STEERING VALVE	1
044	43.01453.00	ELBOW C90M/M NIPPLE	2
045	10.01356.00	HOSE R1T3/8	2
046	46.00670.03	CYLINDER D/E	1
047	10.01382.00	NIPPLE SCREW SIM.	1
048	08.00297.00	NIPPLE O/TB	1
049	46.02420.00	TUBO GOMA B/P 15x25x2500	1

ELECTRIC INSTALLATION

ELECTRIC INSTALLATION

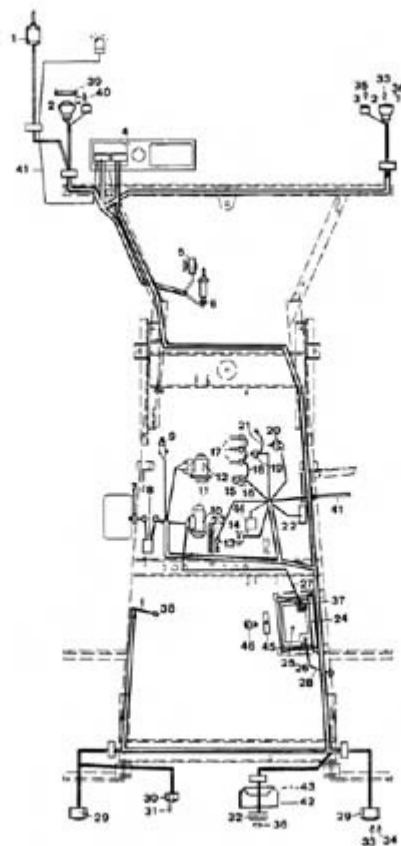


FIGURA	REFERENCIA	DENOMINACIÓN	CANTIDAD
001	46.00843.00	MOTOR WINDSCREEN WIPER	1
002	31.01321.10	BEACON	2
003	46.01323.02	PILOT	2
004	46.01508.07	TABLIER COMP.	1
005	00.09034.00	HORN	1
006	43.01521.00	SWITCH	1
007	43.06261.00	SENSOR	1
008	43.10625.00	BOX.	1
009	43.50119.00	AIR FILTER INDICATOR	1
011	01.00855.00	ACC. FORK	1
013	43.00315.00	SWITCH	1
014	45.04078.00	FUEL PUMP	1
015	45.04113.00	SPRING SUPPORT	1
018	45.04545.00	ELECTRICAL CABLE	1
019	IZ.10008.00	THERMOCONTACT	1
021	45.01517.00	CABLE ELEC. D2,5x130x1	1
022	05.10509.00	RELAY	1
023	46.01529.00	ELECTRICAL CABLE	1

ELECTRIC INSTALLATION

ELECTRIC INSTALLATION

FIGURA	REFERENCIA	DENOMINACIÓN	CANTIDAD
024	46.14100.00	SOP. BATERIA 145x221x232	1
025	00.09035.01	BATTERY	1
026	00.08809.00	ROD F7	2
027	15.01443.00	ELECTRICAL CABLE	1
028	15.01444.00	ELECTRICAL CABLE	1
029	46.01327.00	PILOT	2
030	46.00781.00	BEACON	1
031	31.01329.00	LAMP 12V 21W	1
032	46.10755.00	NUMBER PLATE LIGHT	1
033	31.01329.00	LAMP 12V 21W	6
034	31.01326.00	BULB	2
035	31.01322.00	BULB	2
036	46.01324.00	LAMP 12V 5W	3
037	46.10002.00	TERMINAL PROTECTOR	1
038	260.00	EQUIPO MARTILLO HIDR. DV-17	1
039	31.01321.00	BEACON	2
040	01.00123.00	SPRING COMPRESSION	6
041	46.01515.00	TRAMO I/E	1
042	46.10754.00	PIN SUPPORT 25x195x250	1
043	502.03000.60	RIVET DIN1476	2
044	43.01530.02	RELAY 40 AMP. 5 CONTAC. 6.3MM	1
045	20.11101.00	FIXATION SUPPORT 2X10X70	1
046	603.06030.86	SCREW DIN933 M6x30	1
10 *	86.70000.02	STARTER ENGINE	1
12 *	IZ.10001.00	GENERATOR	1
16 *	43.20070.00	RESISTANCE PRECH 3LB1,3LD1,4LE	1
17 *	86.70000.03	CALENTADOR 3LB1	3
20 *	IZ.10009.00	MONOCONTACTO ACEITE	1

ELECTRIC INSTALLATION

PANEL ELECTRICAL INSTALLATION

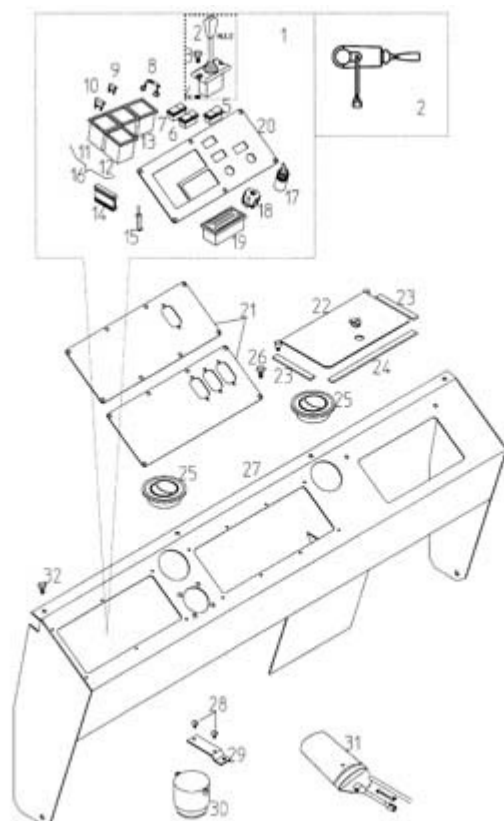


FIGURA	REFERENCIA	DENOMINACIÓN	CANTIDAD
001	46.01508.07	TABLIER COMP.	1
002	60.90620.02	CONMUTATOR	1
003	615.04020.66	SCREW DIN84	2
004	701.04000.66	NUT DIN934 M4	2
005	46.00397.00	SWITCH	1
006	46.50037.00	SWITCH	1
007	46.50036.00	CONMUTATOR	1
008	43.50035.00	DIODE	1
009	43.50036.00	FUSE	1
010	43.50032.00	FUSE 15A	9
011	46.50021.07	PULSE GENERATOR	1
012	46.50021.01	WORK-OUR METER	1
013	46.50021.08	BOX.	1
014	46.50028.00	ADAPTADOR 1921	2
015	46.50029.00	CLAMP	1
016	46.50021.10	BOX.	3
017	43.50022.00	CONMUTATOR WITH KEY	1
018	43.50022.00	CONMUTATOR WITH KEY	1

ELECTRIC INSTALLATION

PANEL ELECTRICAL INSTALLATION

FIGURA	REFERENCIA	DENOMINACIÓN	CANTIDAD
019	01.00877.00	BOX.	1
020	46.00379.02	TAPA SOP. 2x148x355 MANDOS ELE	1
021	46.00377.00	SOP. PAS. FOR. 3x148x385 .	1
021	46.00377.01	SOP. PLAN. REC. 3x148x385	1
021	46.00378.00	SOP. PAS. FOR. 3x148x385 ...	1
021	46.00378.01	SOP. PLAN. REC. 3x148x385 ..	1
022	02.01923.00	TAPA SOP. 1,5x152x269	1
023	02.00780.12	PERFIL GOMA 4x15x120	2
024	02.00780.11	PERFIL GOMA 4x15x269	2
025	46.00368.00	AIR DIFFUSER	2
026	630.05010.96	SCREW ISO7380	14
027	46.10800.03	TABLIER 248x557x1334	1
028	615.03008.66	SCREW	2
029	46.01333.00	SOP. FIJACION 1.5x15x55	1
030	58.01534.00	HORN	1
031	01.00036.02	TOOLS-BAG	1
032	630.10020.86	SCREW	4

ELECTRIC INSTALLATION

ELECTRIC INSTALLATION(CABLES AND CLAMPS)

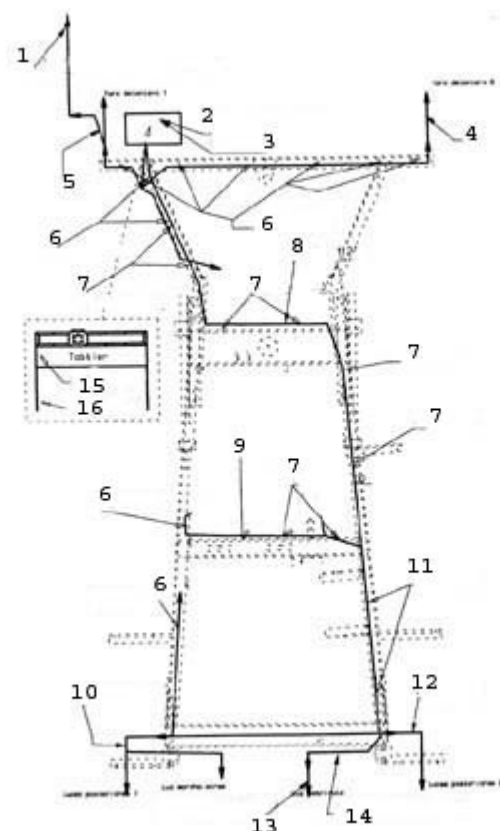


FIGURA	REFERENCIA	DENOMINACIÓN	CANTIDAD
001	46.01509.11	TRAMO I/E FARO ROT. Y LIMPIA	1
001	46.00365.00	TUBO ADMISION 45x49x400 AIRE	1
002	46.00366.00	TUBO ADMISION 45x49x800 AIRE	1
002	46.01508.07	TABLIER COMP.	1
003	46.01501.19	TRAMO I/E TABLIER	1
003	912.40060.66	CLAMP D40-60	4
004	46.00370.00	HEATER	1
004	46.01512.11	TRAMO I/E FARO DEL. IZQ.	1
005	46.01511.11	TRAMO I/E FARO DEL. DER.	1
005	46.00369.00	BALL VALVE D11	1
006	603.05010.86	SCREW DIN933 M5x10	2
006	830.01206.00	CLAMP LOOP	10
007	830.02506.00	CLAMP LOOP	8
008	46.01504.24	LENGTH ELEC. INSTAL.	1
009	830.02206.00	CLAMP LOOP	1
010	46.01506.10	TRAMO I/E FARO TRAS.	1
011	830.01806.00	CLAMP LOOP	1
012	46.01506.10	TRAMO I/E FARO TRAS.	1

ELECTRIC INSTALLATION

ELECTRIC INSTALLATION(CABLES AND CLAMPS)

FIGURA	REFERENCIA	DENOMINACIÓN	CANTIDAD
013	01.00885.00	LENGTH ELEC. INSTAL.	1
015	43.01036.00	CLAMP DIN72573	1

ELECTRIC INSTALLATION HEATER APPLICATION(CIRCUITO AGUA)

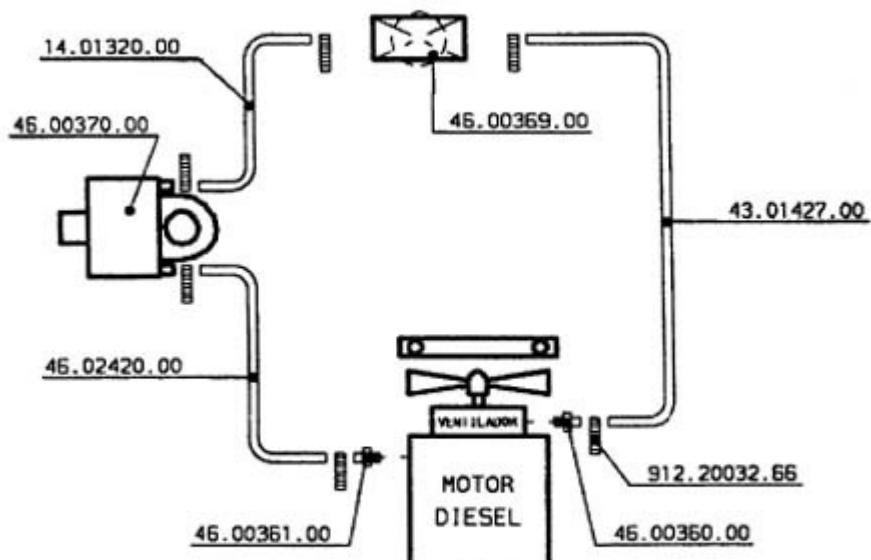


FIGURA	REFERENCIA	DENOMINACIÓN	CANTIDAD
001	14.01320.00	TUBO GOMA B/P 15x25x720	1
002	46.00370.00	HEATER	1
003	46.00369.00	BALL VALVE D11	1
004	46.02420.00	TUBO GOMA B/P 15x25x2500	1
005	46.00361.00	NIPPLE	1
006	43.01427.00	TUBO GOMA B/P 15x25x2100	1
007	912.20032.00	CLAMP	1
008	46.00350.00	TAPON. D75x10	1

FINISHES

ROTATING BEACON AND WINDSCREEN WIPER

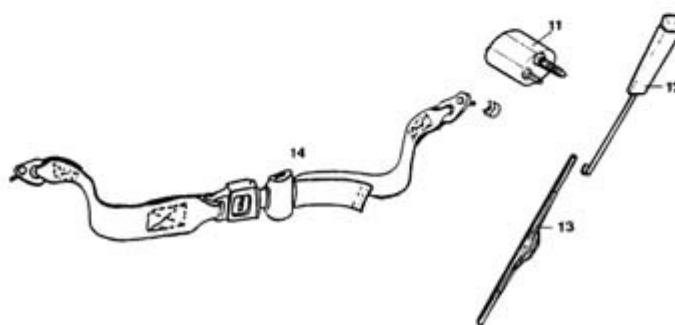


FIGURA	REFERENCIA	DENOMINACIÓN	CANTIDAD
001	01.00922.00	BEACON	1
002	01.00923.00	BULB	1
003	603.06045.86	SCREW DIN933	3
004	101.06000.66	WASHER DIN125 D6	3
005	711.06000.66	NUT DIN982 M6	3
006	46.01509.11	TRAMO I/E FARO ROT. Y LIMPIA	1
007	16.01155.00	GROMMET D11XD15XD19X4X8	2
008	43.50025.00	DUST EXCLUDER	1
009	101.12000.66	WASHER DIN125 D12	1
010	46.50035.00	INTERRRUPTOR LIMPIAPARABRISAS	1
011	46.07295.00	MOTOR WINDSCREEN WIPER	1
012	46.07296.00	BRAZO LIMPIA 9x500	1
013	46.07297.00	WINDSCREEN WIPER BLADE	1
014	45.60002.01	BELT	2

12. FINISHES

STICKERS & PLATES (PART 1)

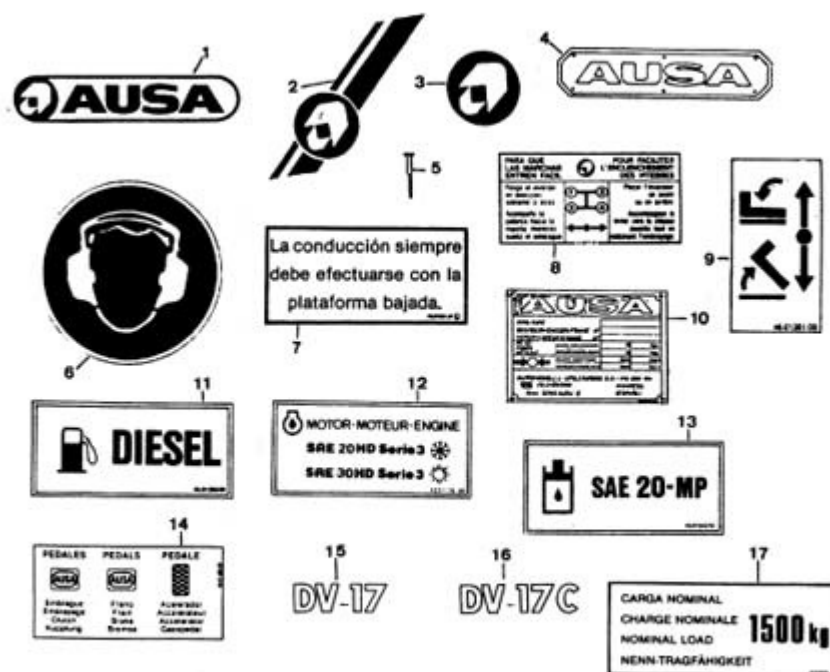


FIGURA	REFERENCIA	DENOMINACIÓN	CANTIDAD
001	46.09903.00	PLATE AD. INDI	1
002	43.10965.00	PLATE AD. INDI	1
003	46.09901.00	PLATE AD. INDI	1
004	01.00788.00	PLATE AD. INDI	1
005	502.05000.60	RIVET DIN1476	4
006	01.00757.00	PLATE AD. INDI	1
007	46.01361.01	PLATE AD. INDI	1
007	46.01361.02	PLATE AD. INDI	1
007	46.01361.03	PLATE AD. INDI	1
007	46.01361.00	PLATE AD. INDI	1
008	45.01354.11	PLATE INDI.	1
008	45.01354.12	PLATE AD. INDI	1
009	46.01351.00	PLATE AD. INDI	1
010	01.00779.26	PLATE - CONTACT WITH AUSA	1
011	43.01356.00	PLATE AD. INDI	1
012	43.01170.00	PLATE AD. INDI	1
013	43.01352.10	PLATE AD. INDI	1
014	46.01355.00	PLATE AD. INDI	1

12. FINISHES

STICKERS & PLATES (PART 1)

FIGURA	REFERENCIA	DENOMINACIÓN	CANTIDAD
015	46.20000.00	PLATE AD. INDI	3
016	46.20000.10	PLATE AD. INDI	3
017	46.01360.00	PLATE AD. INDI	2

12. FINISHES

STICKERS & PLATES (PART 2)

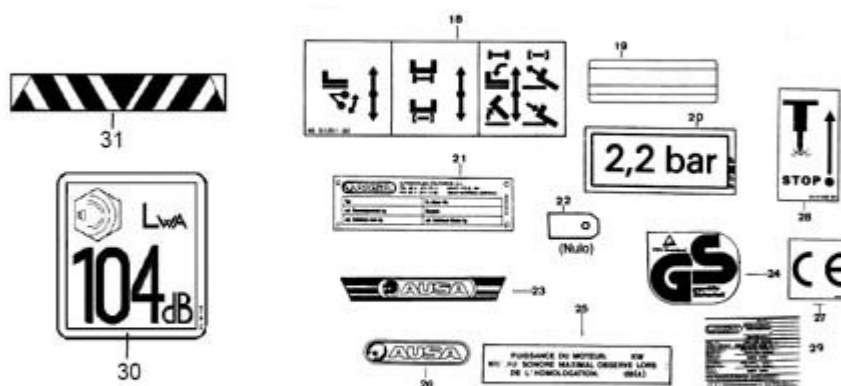


FIGURA	REFERENCIA	DENOMINACIÓN	CANTIDAD
018	46.51351.00	PLATE AD. INDI	1
019	46.01901.10	PLATE AD. INDI	1
020	01.01355.07	PLATE AD. INDI	4
021	01.01779.00	PLATE CHARAC.	1
022	01.13570.00	PLATE AD. INDI	1
023	01.00788.02	PLATE AD. INDI	1
025	01.00767.00	PLATE CHARAC.	1
026	09.09902.01	PLATE AD. INDI	1
027	45.19101.00	PLATE AD. INDI	1
028	46.01352.00	PLATE AD. INDI	1
029	02.00779.21	TAPA REGISTRO 1,5x380x404	1
030	09.12014.00	ADHESIVE	1
031	39.09901.00	PLATE AD. INDI	1

FINISHES

ACOUSTIC WARNING OPTIONAL

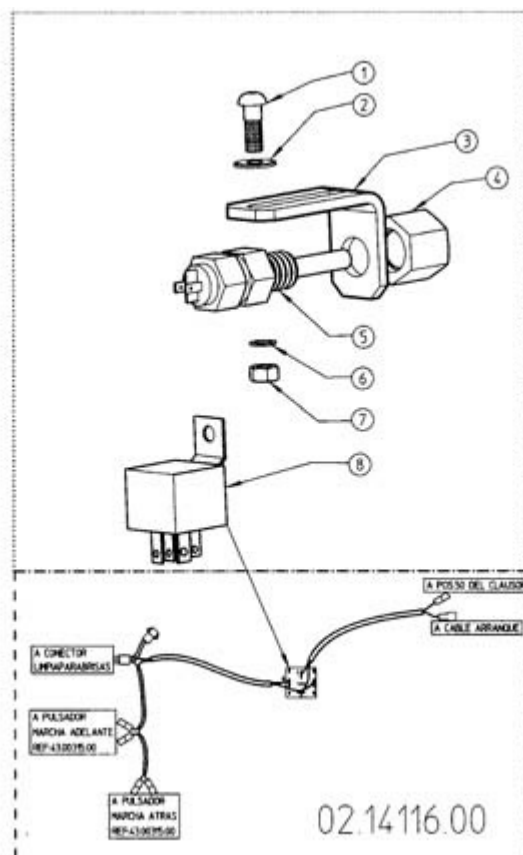


FIGURA	REFERENCIA	DENOMINACIÓN	CANTIDAD
001	630.06015.96	SCREW ISO7380 M6x15	1
002	112.06000.66	WASHER DIN9021 D6	1
003	02.14111.00	BRACKET ANG.	1
004	00.00588.00	NUT	1
005	43.00315.00	SWITCH	1
006	104.06000.00	WASHER DIN7980 D6	1
007	701.06000.66	NUT DIN934 M6X1	1
008	02.14116.00	TRAMO I/E SEGUR.ARRAN DUMPER	1

FINISHES

PIPES(OPTIONAL)

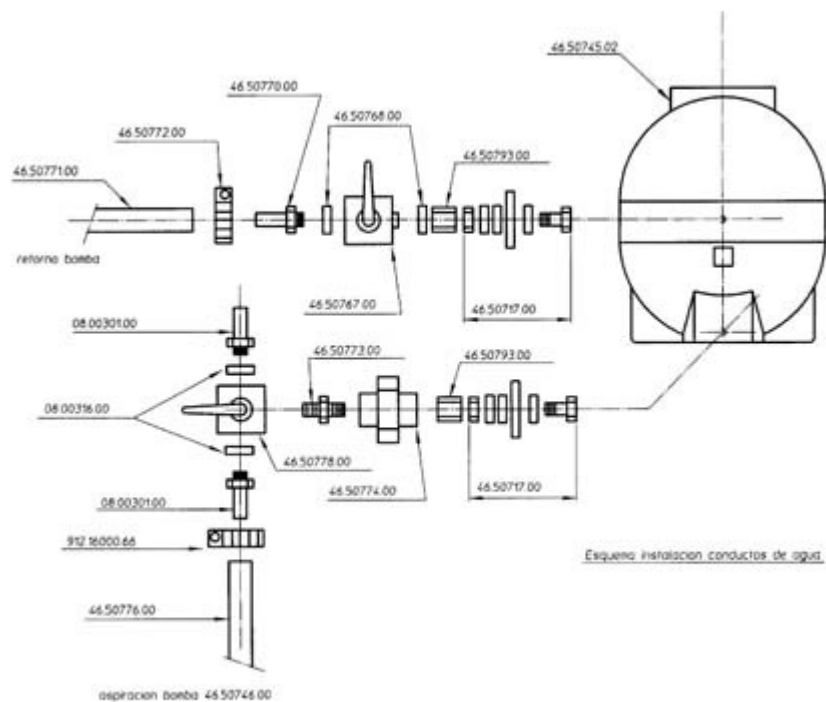


FIGURA	REFERENCIA	DENOMINACIÓN	CANTIDAD
001	46.50771.00	TUBO PLAS. TRANS. 13x17x360	1
002	46.50772.00	CLAMP	1
003	46.50770.00	ESPIGA MANGUERA 13-R 1/2 G	1
004	46.50768.00	*JUNTA COBRE D22	2
005	46.50793.00	NIPPLE	1
006	46.50745.02	TANK	1
007	08.00301.00	NIPPLE M/TB 1/2G-D16	1
008	46.50767.00	VALVULA ESFERA 1/2G MIN.	1
009	46.50717.00	NIPPLE	2
010	08.00316.00	METALLIC GASKET BUNA D1/2 G	2
011	46.50773.00	NIPPLE	1
012	46.50793.00	NIPPLE	1
013	46.50778.00	VALVULA 1/2G ESFERA	1
014	46.50774.00	ENLACE 3 PIEZAS 1/2G-M/H-M	1
015	46.50717.00	NIPPLE	1
016	912.16000.00	CLAMP	1
017	46.50776.00	TUBO PLAS. TRANS. 15x21x620	1
018	46.50746.00	BOMBA AGUA 15L COMP.	1

FINISHES

WATER TANK OPTIONAL

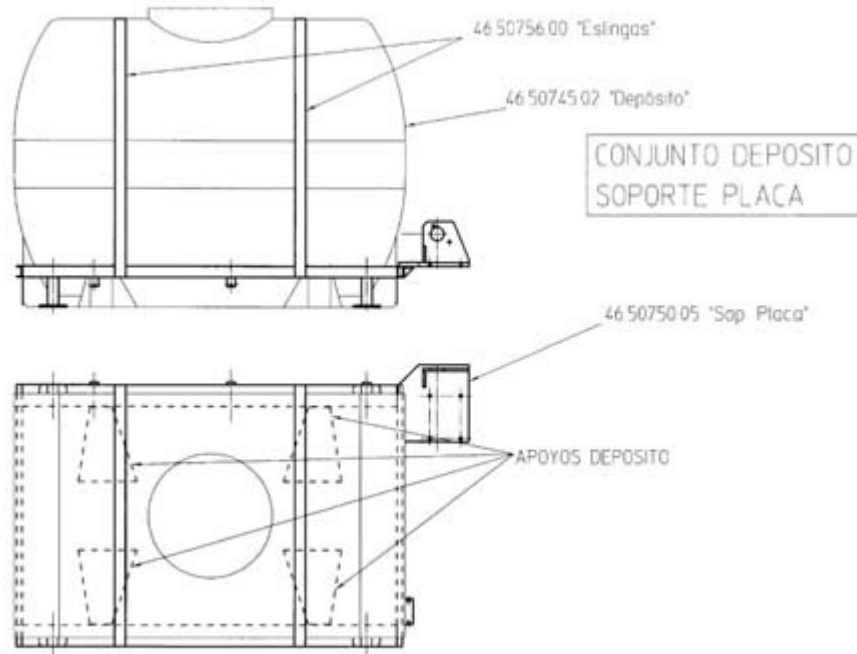


FIGURA	REFERENCIA	DENOMINACIÓN	CANTIDAD
001	46.50756.00	CINTA SUJETACARGA	2
002	46.50745.02	TANK	1
003	46.50750.05	SOP. PLACA 150X965X1415	1

HYDRAULIC HAMMER INSTALLATION

HYDRAULIC HAMMER INSTALLATION(OPTIONAL)

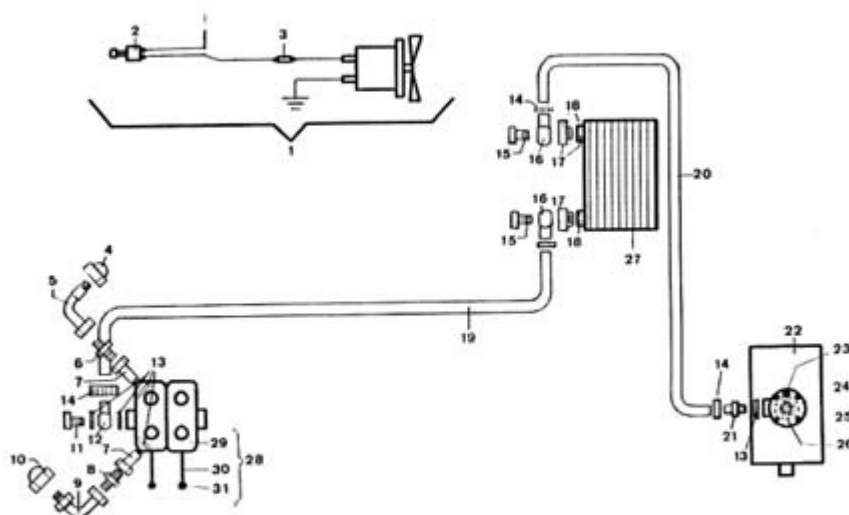


FIGURA	REFERENCIA	DENOMINACIÓN	CANTIDAD
001	09.70034.00	SWITCH	1
002	09.70034.00	SWITCH	1
003	01.00928.00	FUSE BOX	1
004	09.70027.00	NUT	1
005	15.01355.00	ELBOW C90LM/H NIPPLE	1
006	08.00313.00	FITTING M/M 1/2 G-3/8 G	1
007	08.00312.00	NIPPLE M/H	2
008	08.00319.00	NIPPLE M/M	1
009	45.01365.10	ELBOW C90M/H NIPPLE	1
010	15.01226.00	NUT	1
011	08.00315.00	NIPPLE SCREW SIM.	1
012	08.00297.00	NIPPLE O/TB	1
013	08.00317.00	METALLIC GASKET BUNA D3/8	8
014	912.20032.00	CLAMP	4
015	16.01372.00	NIPPLE SCREW SIM.	2
016	16.01371.00	NIPPLE O/TB	2
017	52.01463.00	NIPPLE	2
018	47.01480.00	NIPPLE	2

HYDRAULIC HAMMER INSTALLATION

HYDRAULIC HAMMER INSTALLATION(OPTIONAL)

FIGURA	REFERENCIA	DENOMINACIÓN	CANTIDAD
019	15.01236.00	TUBO GOMA B/P 15x25x1345	1
020	10.01360.00	TUBO GOMA B/P 15x25x880	1
021	08.00301.02	NIPPLE M/TB	1
022	46.01240.00	TANK	1
023	43.01433.01	ROD OIL LEVEL	1
024	08.00350.01	AD. FILTER SUPPORT	1
025	08.00360.01	OIL FILTER	1
026	00.02803.00	SCREW DIN910*	1
027	52.01460.00	RADIATOR	1
028	09.70023.00	DISTRIBUIDOR 2E	1
029	09.70023.00	DISTRIBUIDOR 2E	1
030	09.00331.01	CONTROL LEVER	2
031	60.01007.00	KNOB	2
032	43.50032.00	FUSE 15A	1

HYDRAULIC HAMMER INSTALLATION RADIATOR AND ELECTROVENTILATOR

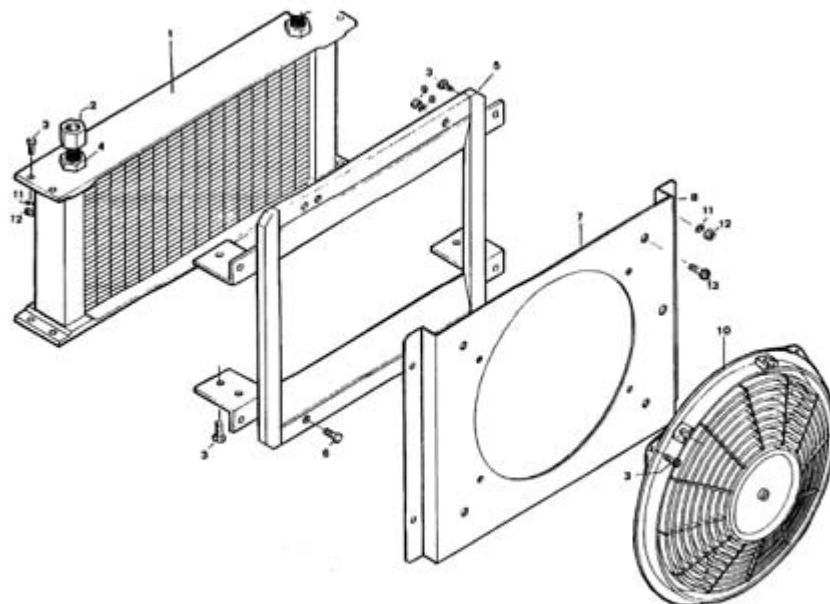


FIGURA	REFERENCIA	DENOMINACIÓN	CANTIDAD
001	52.01460.00	RADIATOR	1
002	52.01463.00	NIPPLE	2
003	603.06015.86	SCREW DIN933 M6x15	8
004	47.01480.00	NIPPLE	2
005	47.01482.00	SOP. VENTILADOR 10x275x305	1
006	603.08025.86	SCREW DIN933 M8x25	4
007	43.10973.01	SOP. VENTILADOR 10x275x305	1
008	101.08000.66	WASHER DIN125 D8	4
009	701.08000.86	NUT	4
010	43.10222.00	FAN	1
011	104.06000.00	WASHER DIN7980 D6	8
012	701.06000.86	NUT	8
013	604.08040.86	SCREW DIN931	4

HYDRAULIC HAMMER INSTALLATION ACCELERATOR CONTROL

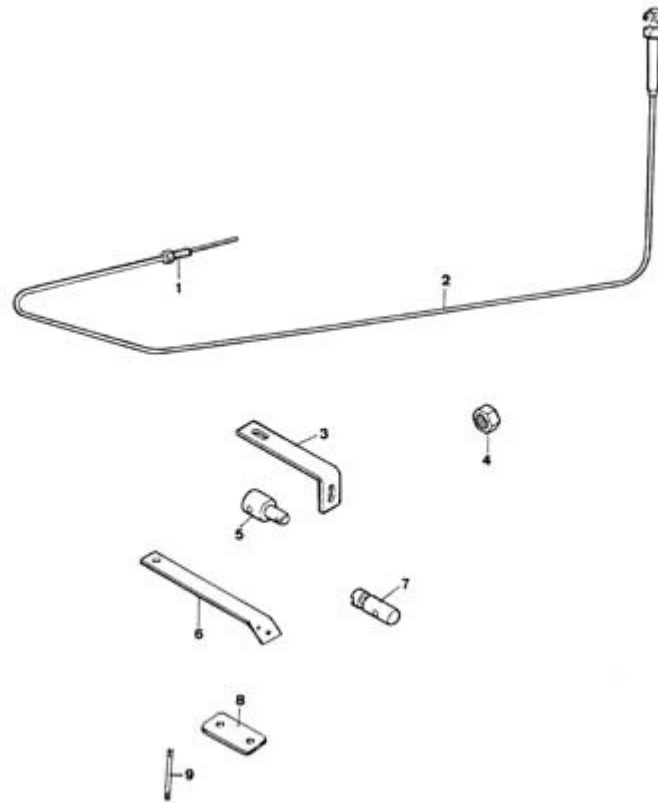


FIGURA	REFERENCIA	DENOMINACIÓN	CANTIDAD
001	54.59180.00	TENSIONER	1
002	46.30201.00	CABLE DISTR. 1850 MM.	1
003	46.01492.00	SOP. RADIADOR 3X35X100	1
004	701.08000.86	NUT	1
005	54.50688.01	LATCH	1
006	46.10595.00	SOP. RESORTE 4x25x220	1
007	45.03150.00	LATCH	1
008	46.01493.00	TAPA. 2x40x78	1
009	46.50355.01	VARILLA FOR.6 104 @-@	3

INDICE

02. ENGINE

radiator 2

Hydraulic diagram installation

motor support 3

02. ENGINE

Gas-oil tank 4

Air filter comp. 6

Silencer 7

CLUTCH 8

ACCELERATOR 9

Brake controls 11

Brake 13

Installation freins hydraulique 14

Brake pump 15

Oil tank 16

TRANSMISSION

Clutch bell housing 18

Clutch pedal 20

Gearbox (external) 22

Gearbox (internal) 24

Differential 27

Shift gear levers 29

Reverse control 31

Front axle 32

Front axle(hubs and disc brake) 34

Rear axle 36

CHASSIS

Chassis and Shields 38

BRAKE ACTIVATION

Parking Brake 40

STEERING

Steering 42

Steering cylinder mounting Rear axle	43
Wheel	
WHEELS	45
BODY	
Seat	46
Machine operation tools	
Skip Lifting Ram	47
Regulator valve	48
Platform(standar)	49
Driver cab	50
Cabin(optional)	52
Container(DV17.C)	54
Port-containers(DV17.C)	55
Cabin(optional)	57
Hydraulic installation	
Hydraulic diagram installation	58
Hydraulic installation(clamps)	60
Hydraulic diagram installation(DV17.C)	61
Electric Installation	
Electric Installation	63
Panel electrical installation	65
Electric installation(cables and clamps)	67
Heater application(circuito agua)	69
FINISHES	
Rotating beacon and Windscreen wiper	70
12. FINISHES	
STICKERS & PLATES (PART 1)	71
STICKERS & PLATES (PART 2)	73
FINISHES	
Acoustic warning OPTIONAL	74
Pipes(Optional)	75
Water tank OPTIONAL	76

Hydraulic hammer installation

Hydraulic hammer installation(optional)	77
Radiator and Electroventilator	79
Acelerator control	80